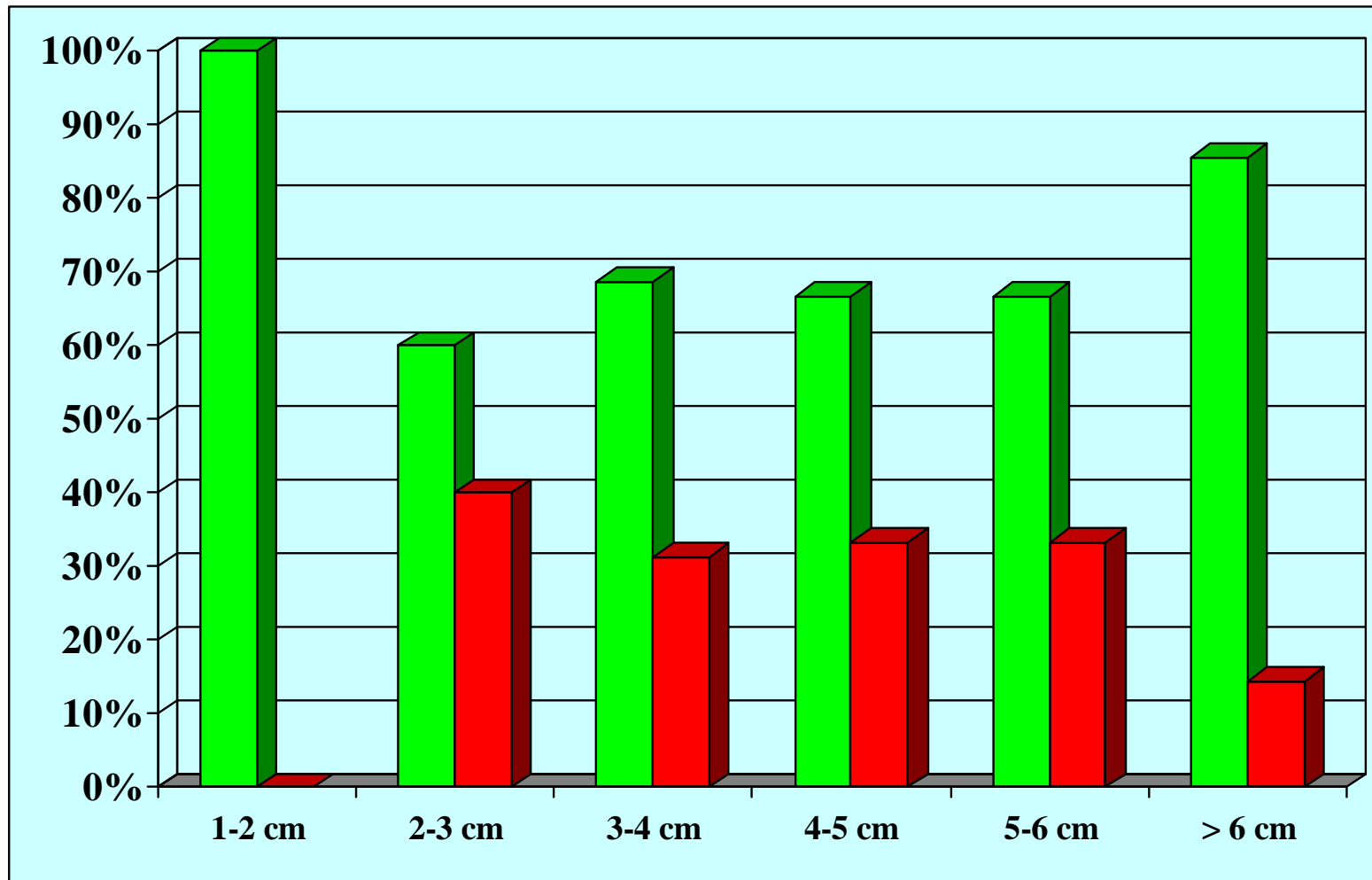


Results according to the stricture length



	1-2 cm	2-3 cm	3-4 cm	4-5 cm	5-6 cm	> 6 cm
■ success	1 (100%)	3 (60%)	11 (68.7%)	12 (66.7%)	8 (66.7%)	6 (85.7%)
■ failure	/	2 (40%)	5 (31.3%)	6 (33.3%)	4 (33.3%)	1 (14.3%)