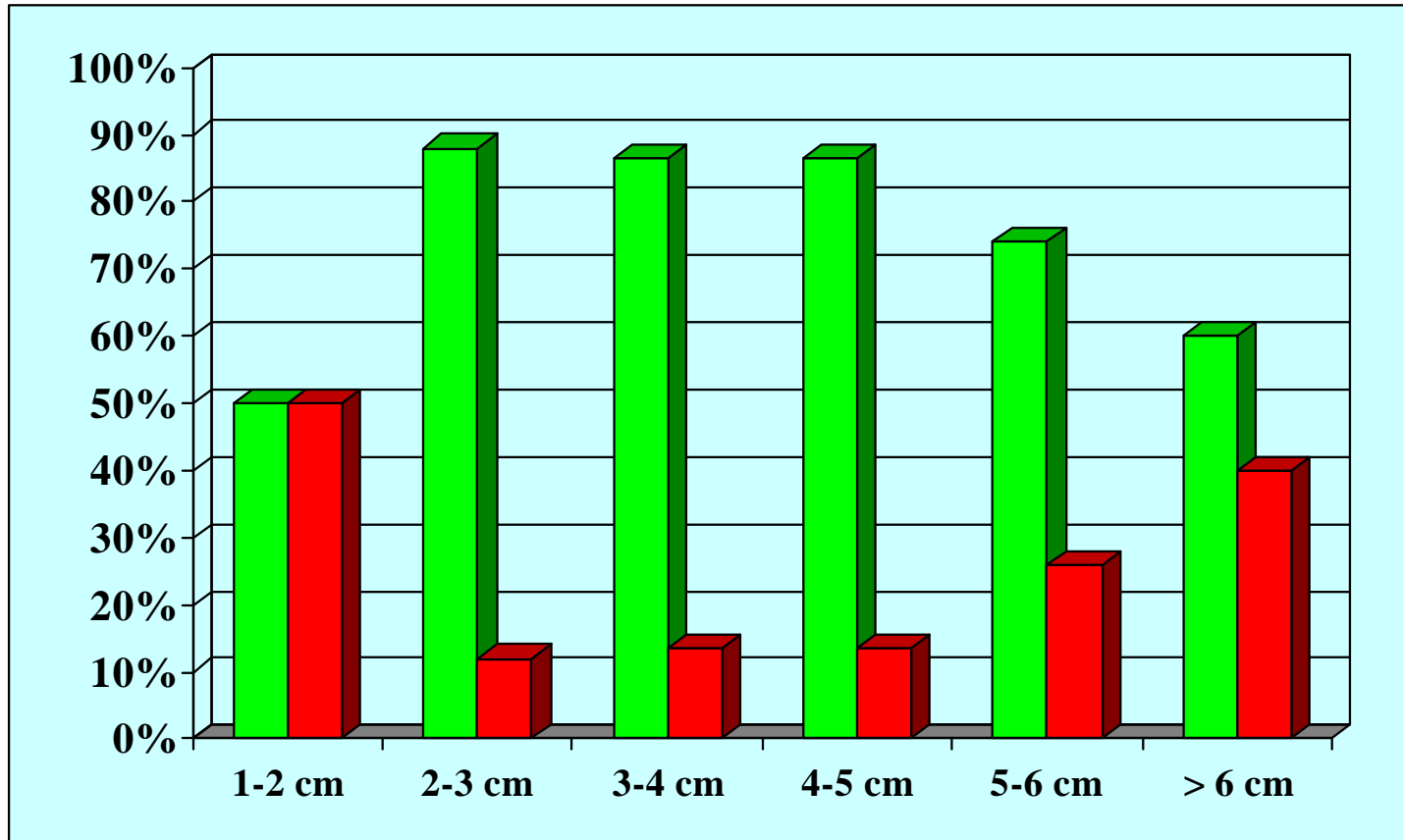


Results according to the stricture length



	1-2 cm	2-3 cm	3-4 cm	4-5 cm	5-6 cm	> 6 cm
■ success	3 (50%)	22 (88%)	96 (86.5%)	149 (86.6%)	54 (74%)	6 (60%)
■ failure	3 (50%)	3 (12%)	15 (13.5%)	23 (13.4%)	19 (26%)	4 (40%)