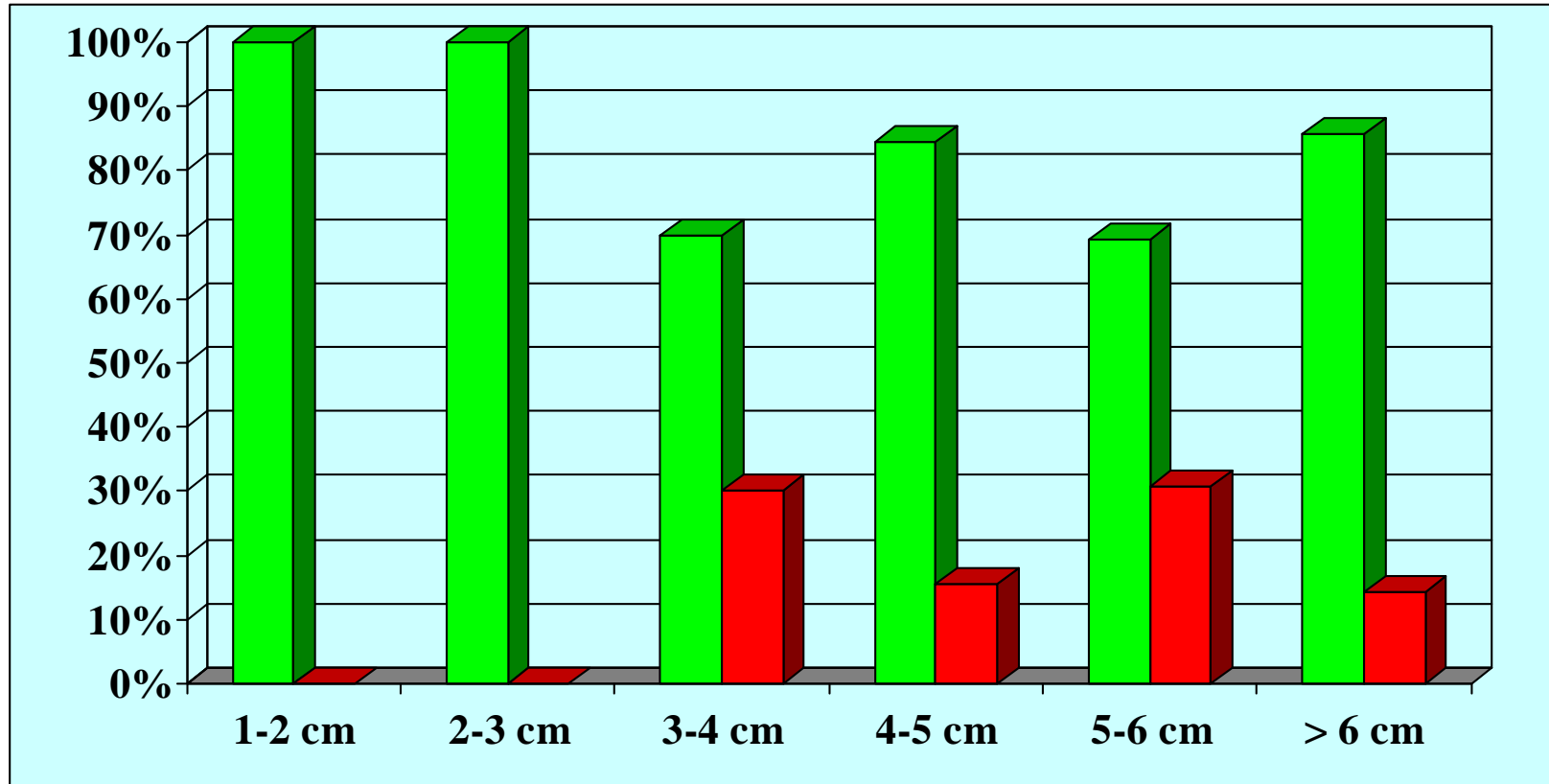


Risultati in rapporto alla lunghezza della stenosi



	1-2 cm	2-3 cm	3-4 cm	4-5 cm	5-6 cm	> 6 cm
■ successo	1 (100%)	3 (100%)	7 (70%)	11 (84.6%)	9 (69.2%)	6 (85.7%)
■ fallimento	/	/	3 (30%)	2 (15.4%)	4 (30.8%)	1 (14.3%)