

Center for Reconstructive Urethral Surgery



GUIDO BARBAGLI M.D.

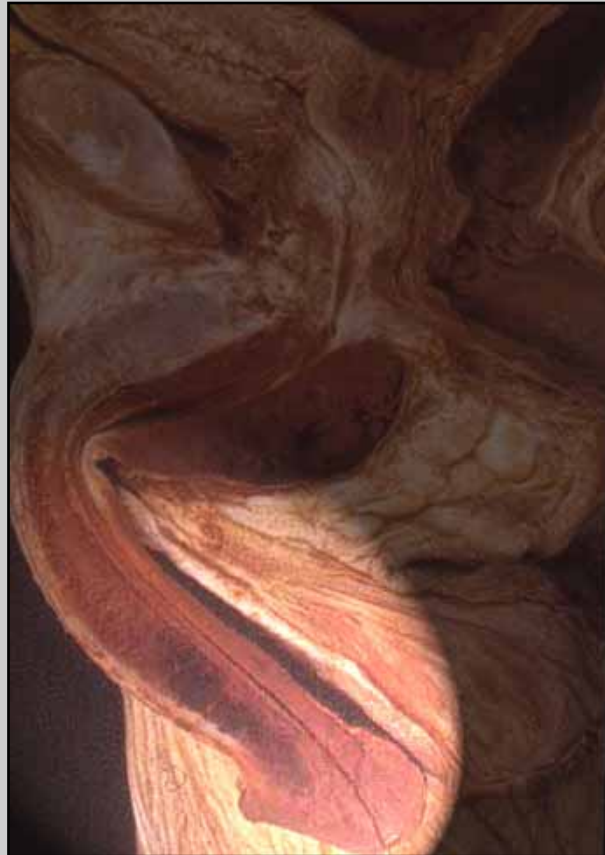
Arezzo - ITALY

e-mail: info@urethralcenter.it

Website: www.urethralcenter.it

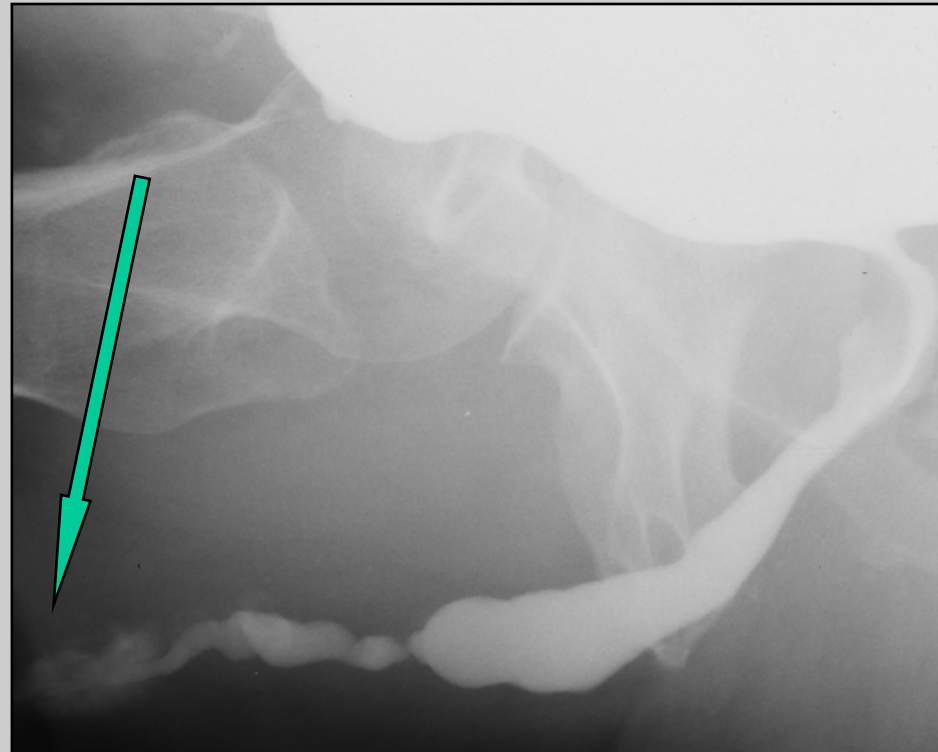
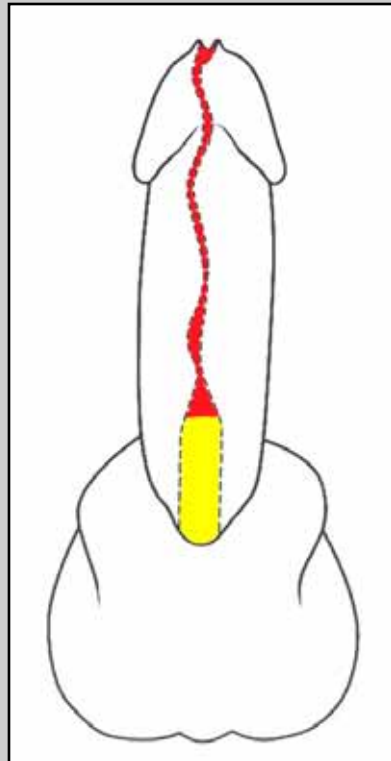
First stage of Johanson procedure

First stage of Johanson procedure



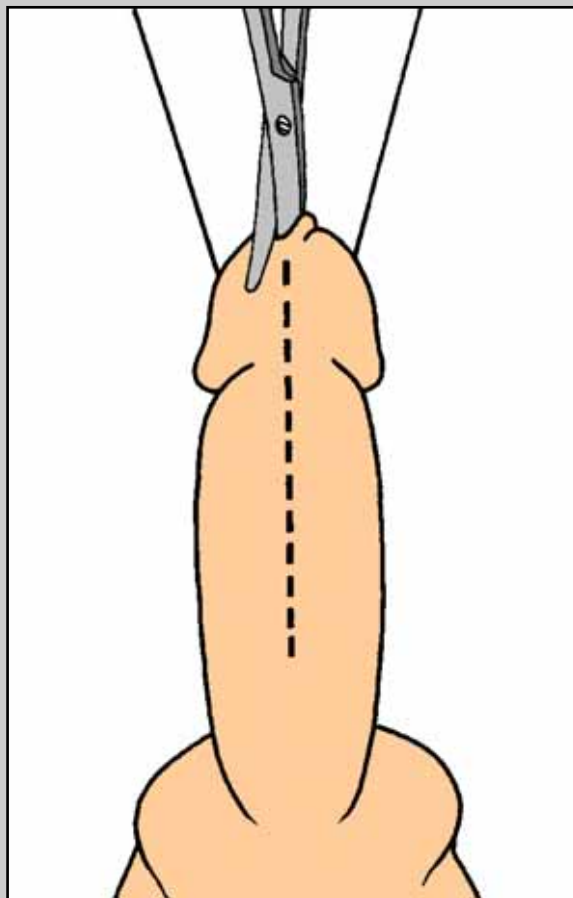
Penile urethra

Johanson's technique

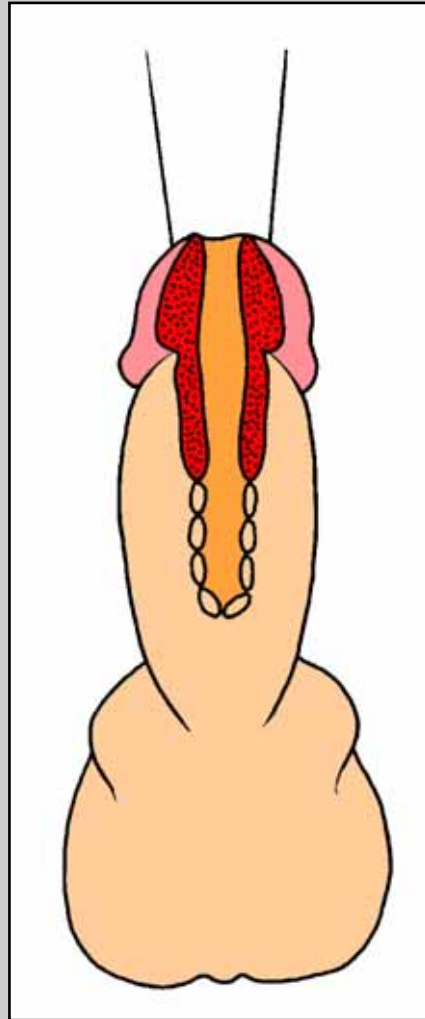


Obliterative penile urethral strictures involving external urinary meatus

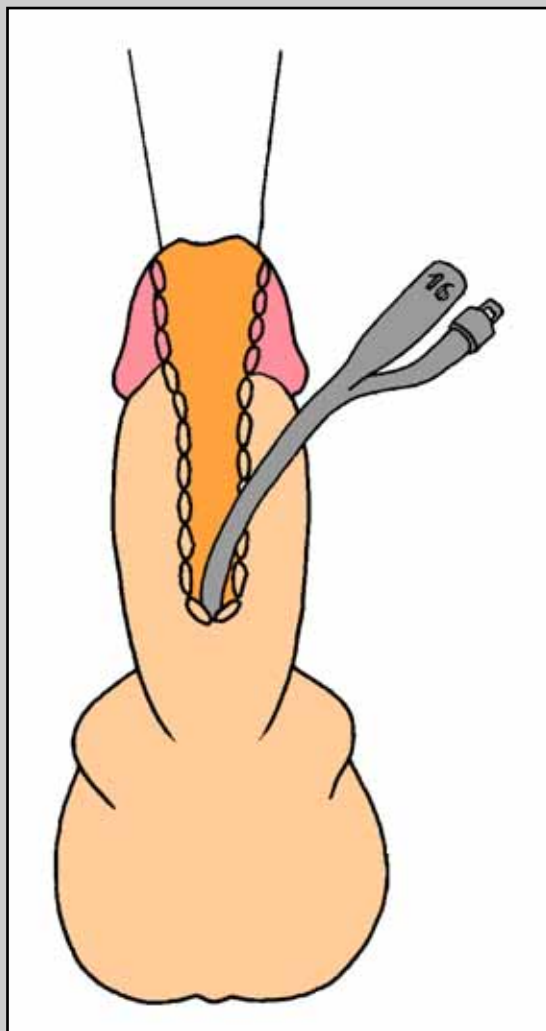
Johanson's technique



Johanson's technique



Johanson's technique



Johanson's technique



Final appearance of penile shaft following first stage of Johanson procedure

Post-operative care

- **Patient is discharged from the hospital two days after surgery**
- **Patient is maintained on oral antibiotics until the catheter is removed**
- **Two months following surgery, the patient is evaluated at follow-up visit in outpatient service**