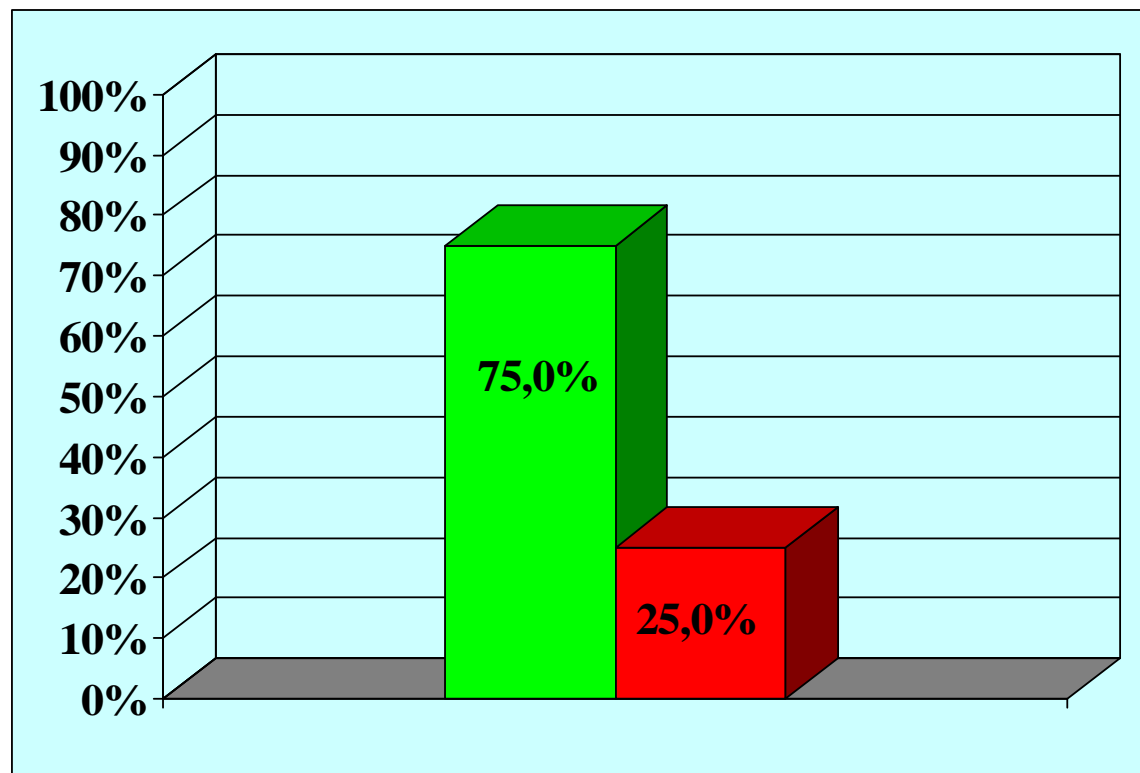




**Risultati su 24 pazienti sottoposti ad anastomosi termino-terminale con innesto dorsale di mucosa orale**

**Follow-up medio 137 mesi (110 – 167 mesi), aggiornato al 31-12-2015**



 <b>successo</b>	<b>18 (75%)</b>
 <b>fallimento</b>	<b>6 (25%)</b>