

# Center for Reconstructive Urethral Surgery



**GUIDO BARBAGLI M.D.**

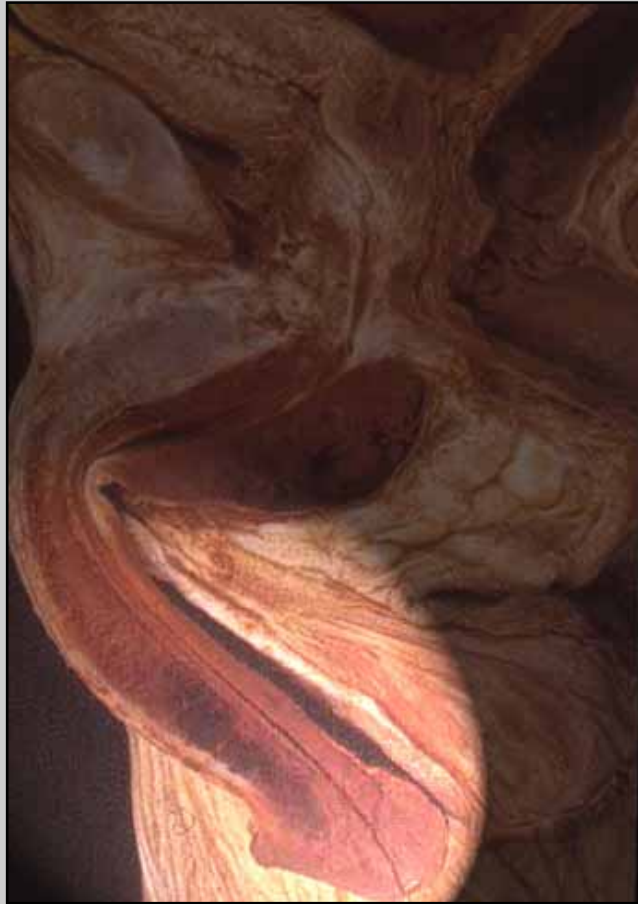
**Arezzo - ITALY**

**e-mail: [info@urethralcenter.it](mailto:info@urethralcenter.it)**

**Website: [www.urethralcenter.it](http://www.urethralcenter.it)**

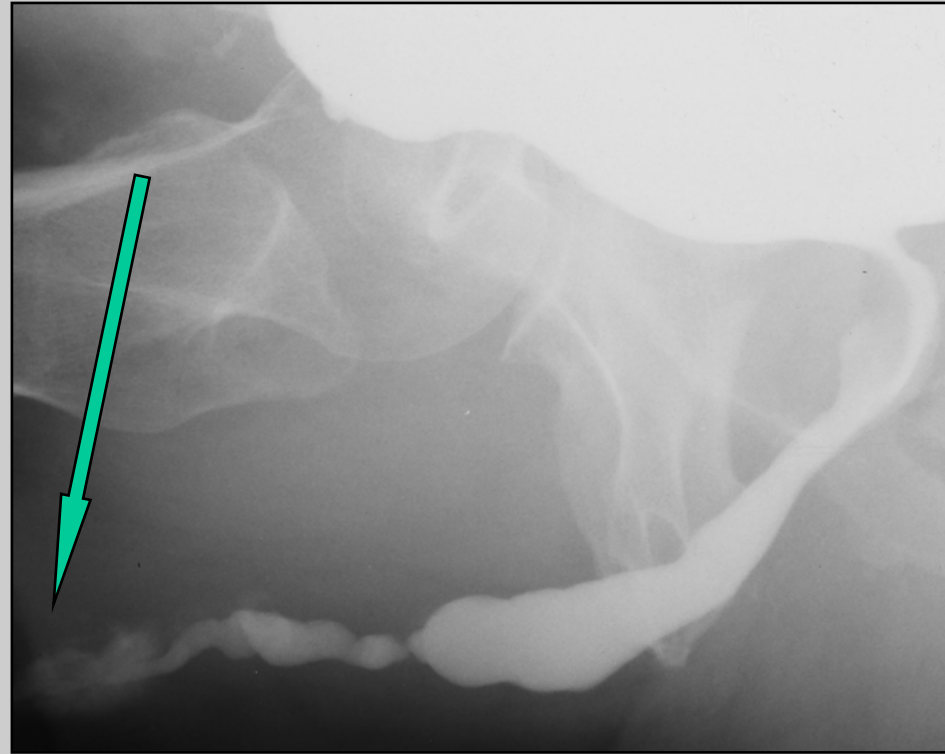
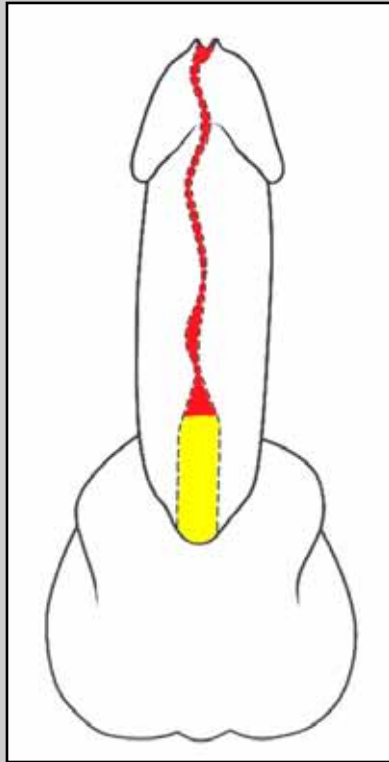
# Two-stage urethroplasty

# Two-stage urethroplasty



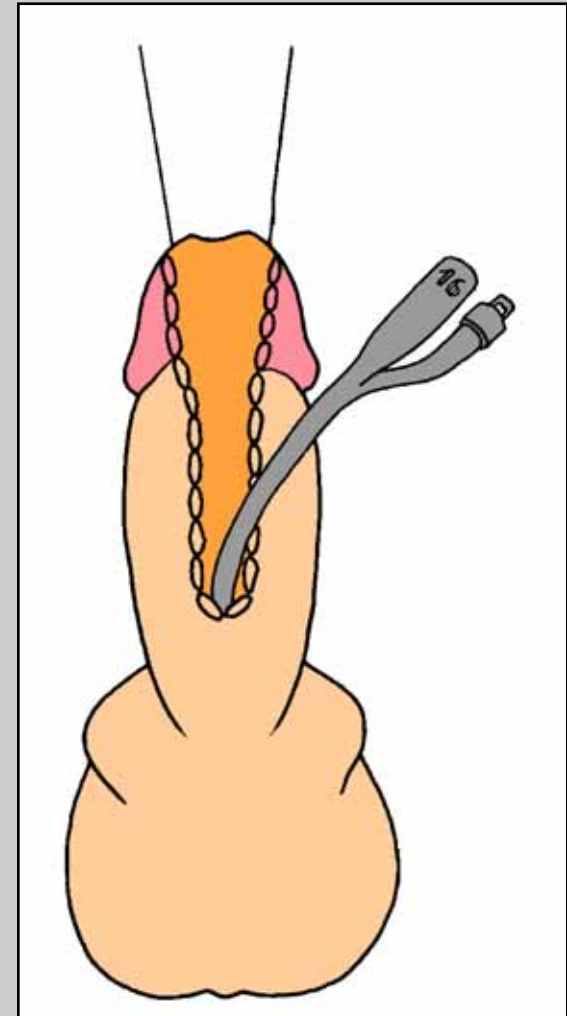
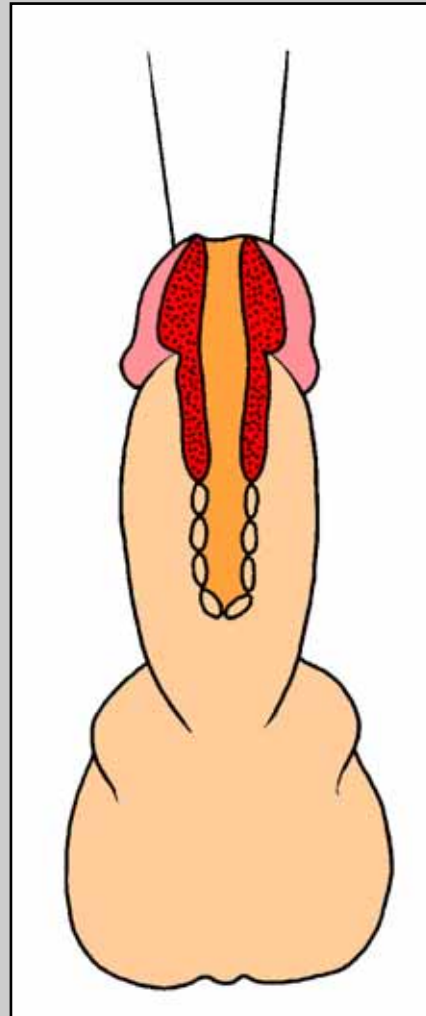
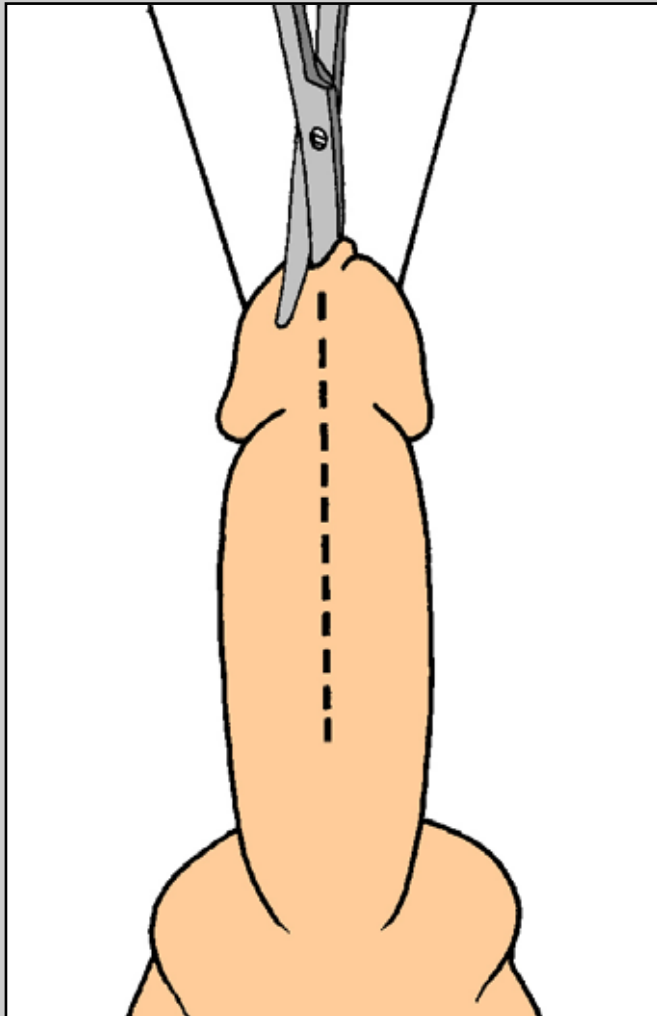
**Penile urethra**

# Two-stage urethroplasty



**Obliterative penile urethral strictures involving the external urinary meatus**

# First stage

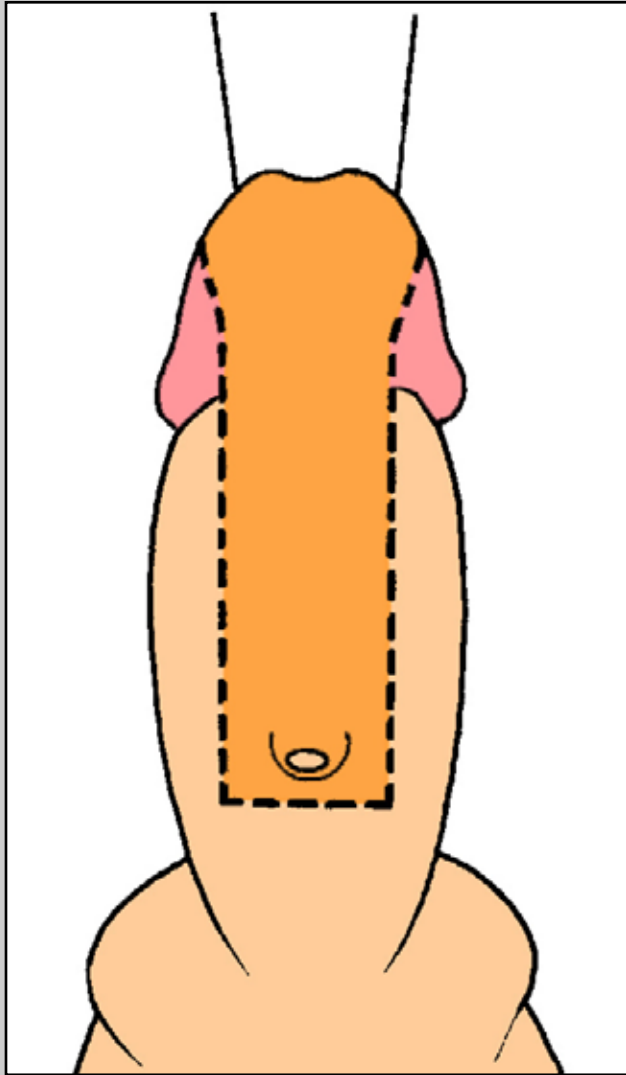


## Second stage

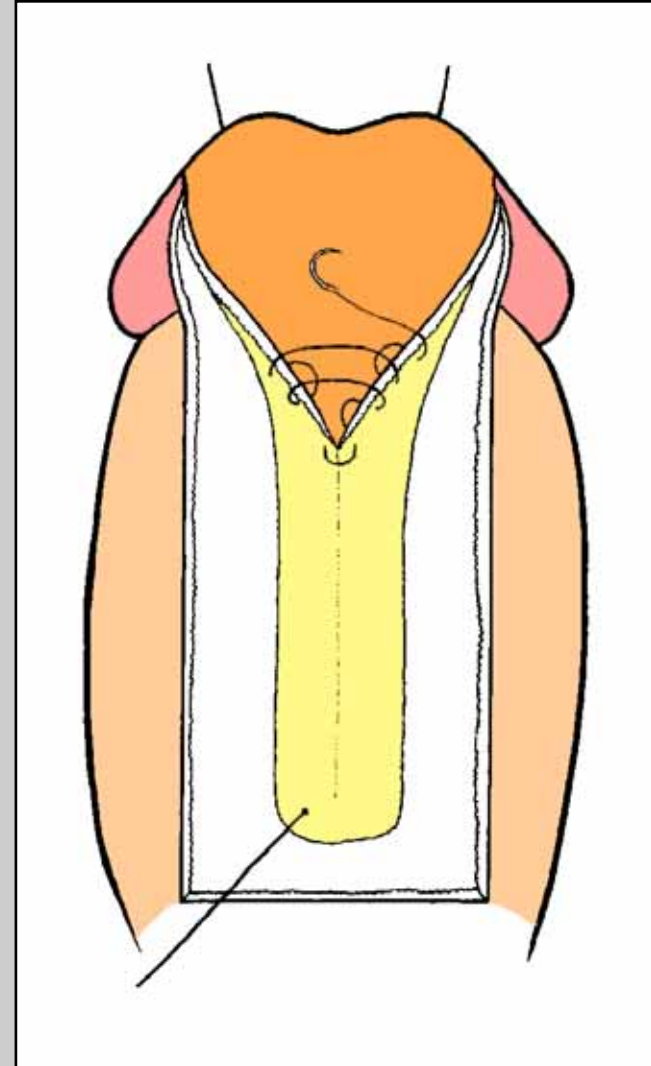
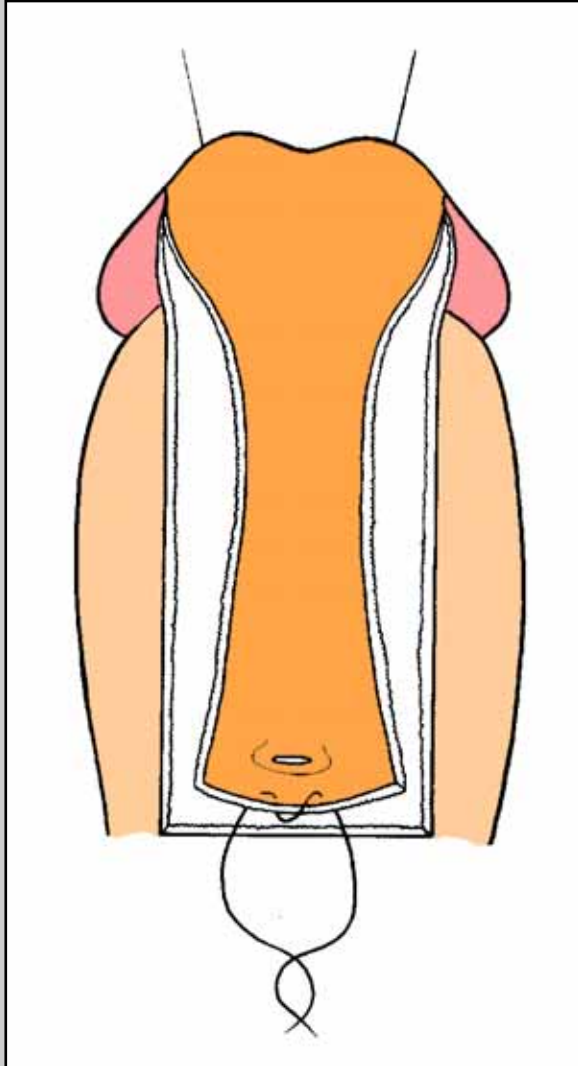


**Final appearance of the penile shaft following the first stage**

## Second stage

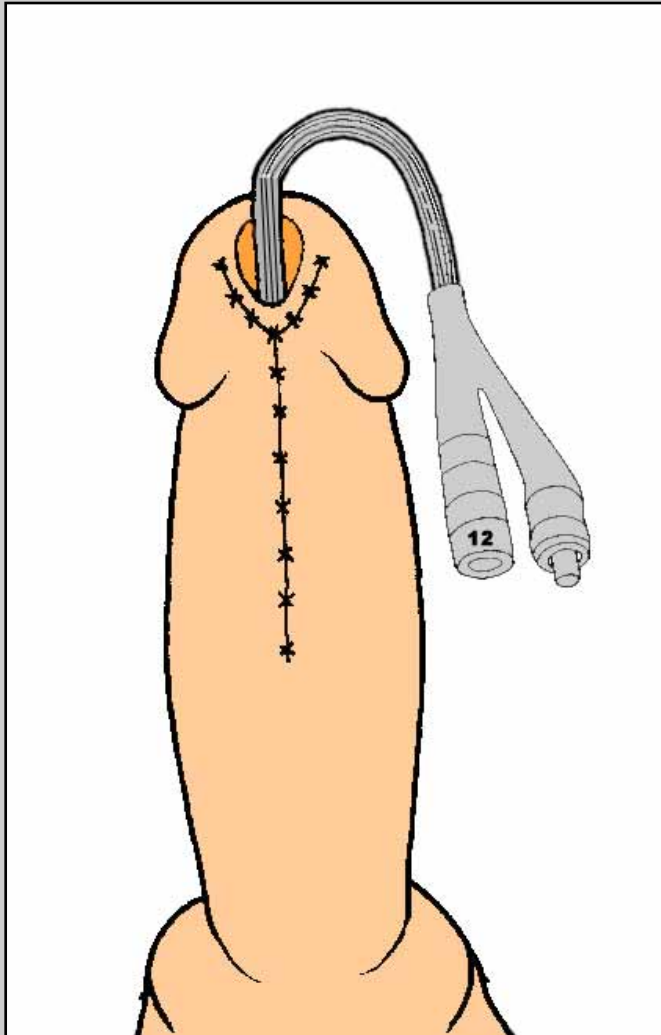


## Second stage





## Second stage



# Post-operative care

- **Patient is discharged from the hospital three days after surgery**
- **Patient is maintained on oral antibiotics until the catheter is removed, 10 days following surgery**
- **Two months following surgery, the patient is evaluated at follow-up visit in outpatient service including uroflowmetry**

# Complications following one-stage flap or graft penile urethroplasty



**penile hematoma**



**skin necrosis**



**fistula**



**sacculation**



**meatal stenosis**