



Guido Barbagli

Center for Reconstructive Urethral Surgery

Arezzo - Italy

E-mail: guido@rdn.it

Website: www.urethralcenter.it

23rd ANNUAL EAU CONGRESS

EAU – USI Session

**Joint session of the European Association of
Urology (EAU) and the Urological Society of
India (USI)**

26 – 29 March 2008

Milan – Italy



G. Barbagli and D. Dubey



Round table

L. Martínez-Piñeiro

N.P. Gupta

S.B. Kulkarni

S. Joniau

Clinical cases presentation and discussion



Case history

Patient 74 years old

Previous radical
prostatectomy -
impotence

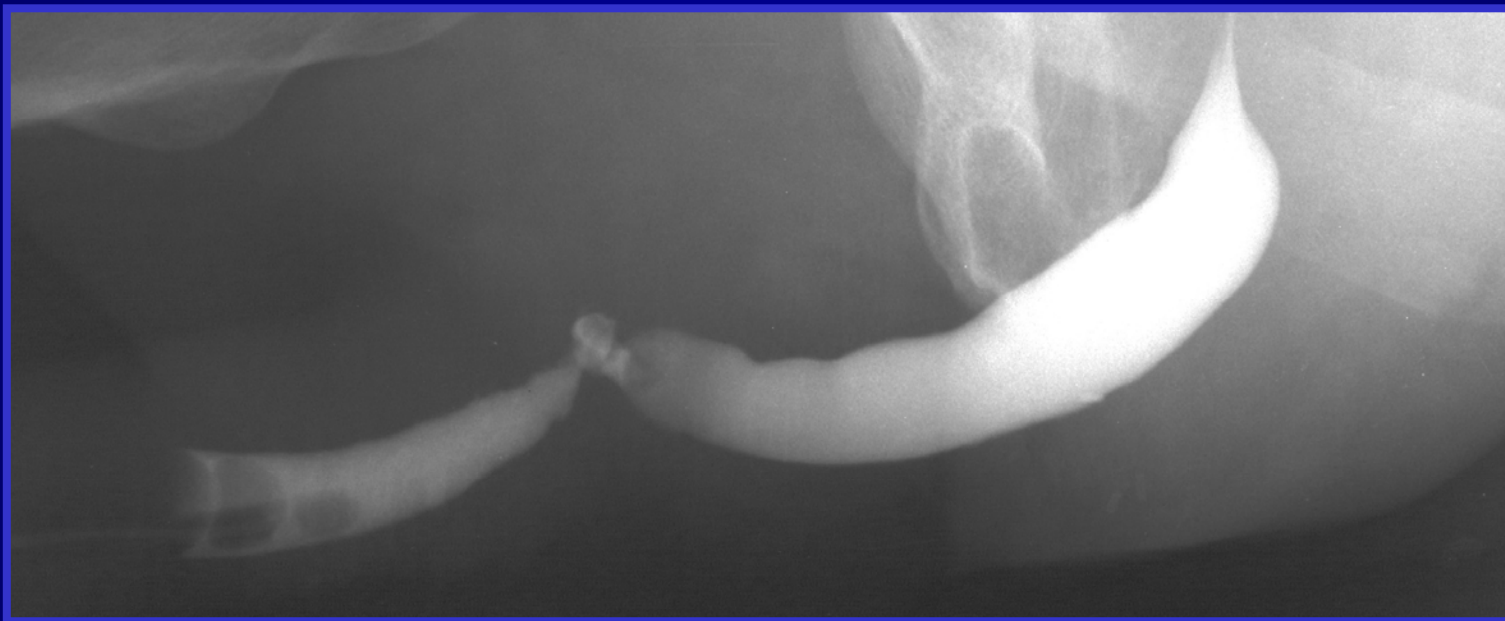
Three urethrotomies
for penile urethral
stricture



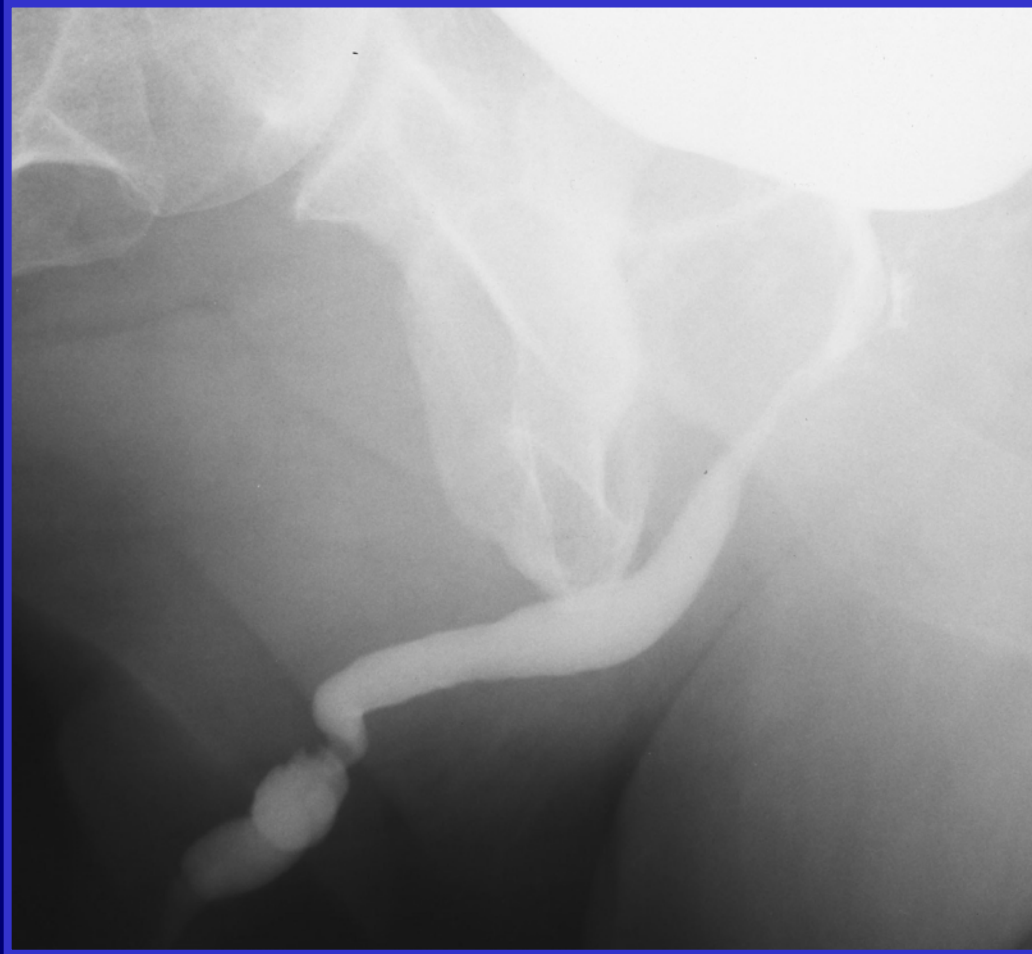
No genital lichen
sclerosis



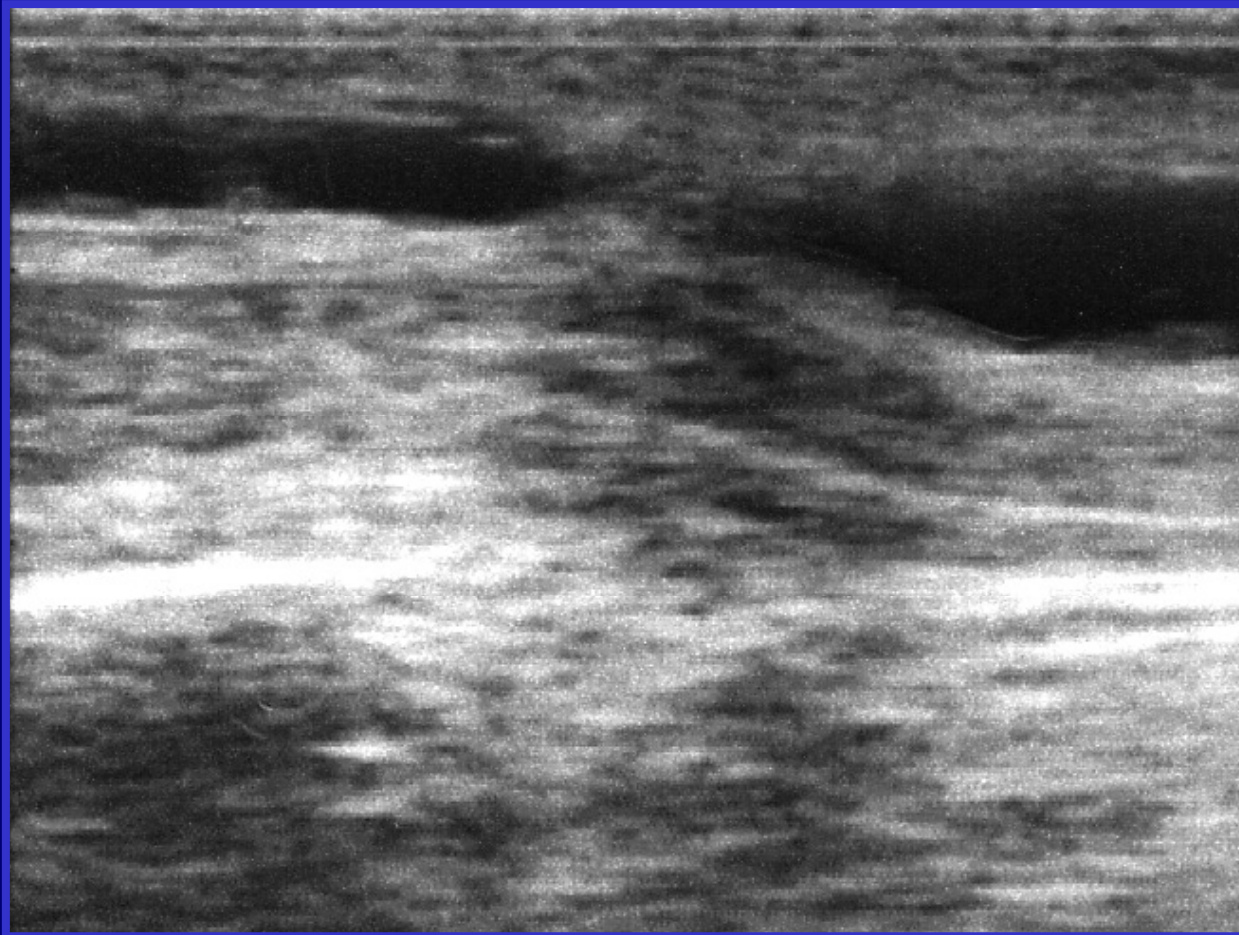
Retrograde urethrography



Voiding cystourethrography



Sonourethrography



Diagnosis

Penile urethral stricture, 1.5 cm in length, recurrent following repeated internal urethrotomies, in **impotent** patient who underwent radical prostatectomy



Surgical options

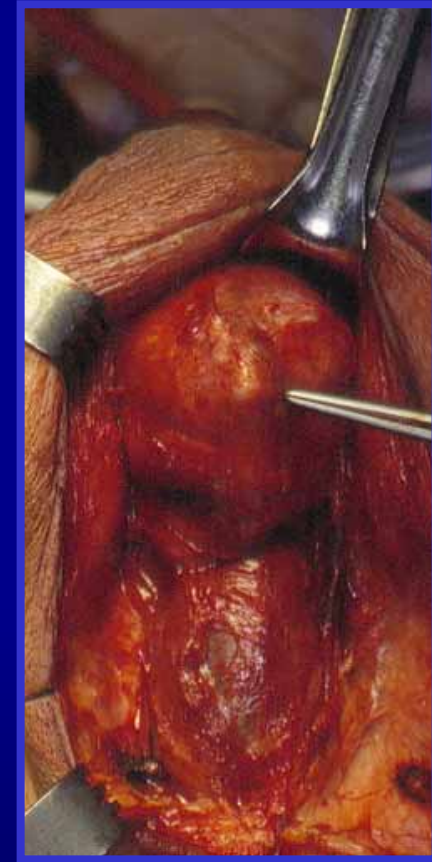
1. Periodic dilation
2. Urethrotomy
3. End-to-end anastomosis
4. One-stage penile skin flap urethroplasty
5. One-stage graft urethroplasty
6. Johanson's procedure
7. Other



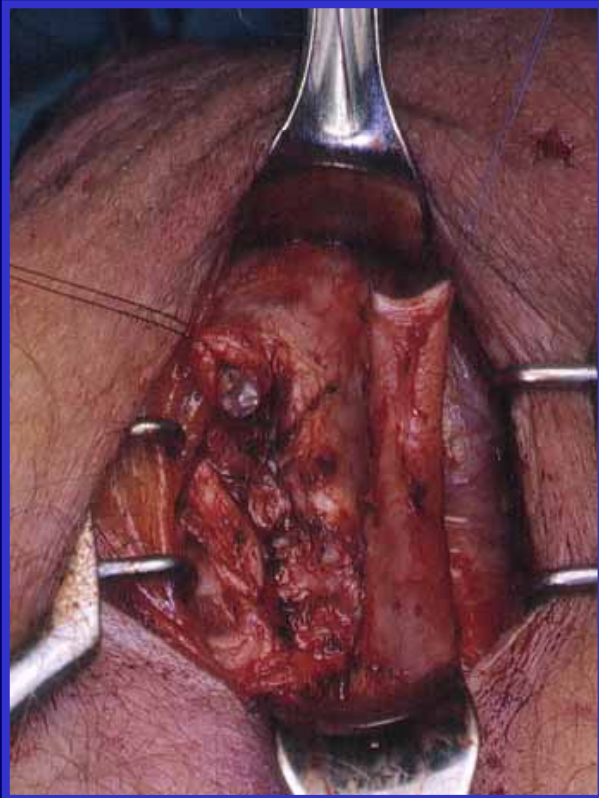
Postoperative urethrography



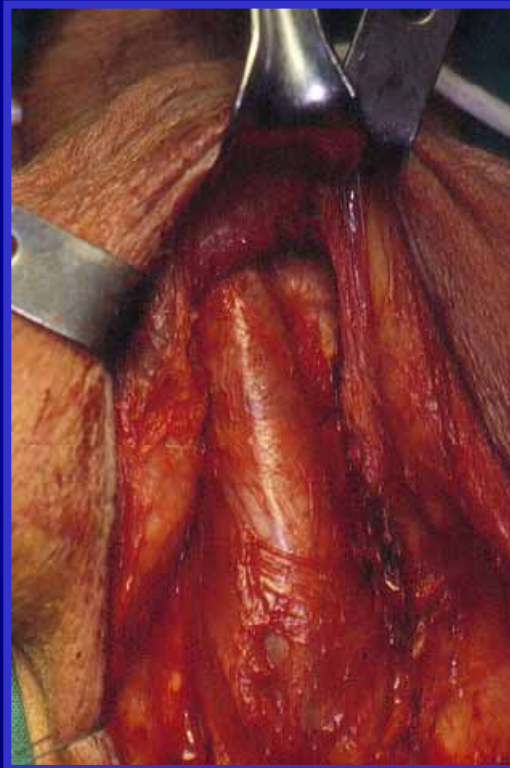
End-to-end anastomosis through perineal approach



End-to-end anastomosis through perineal approach



End-to-end anastomosis through perineal approach



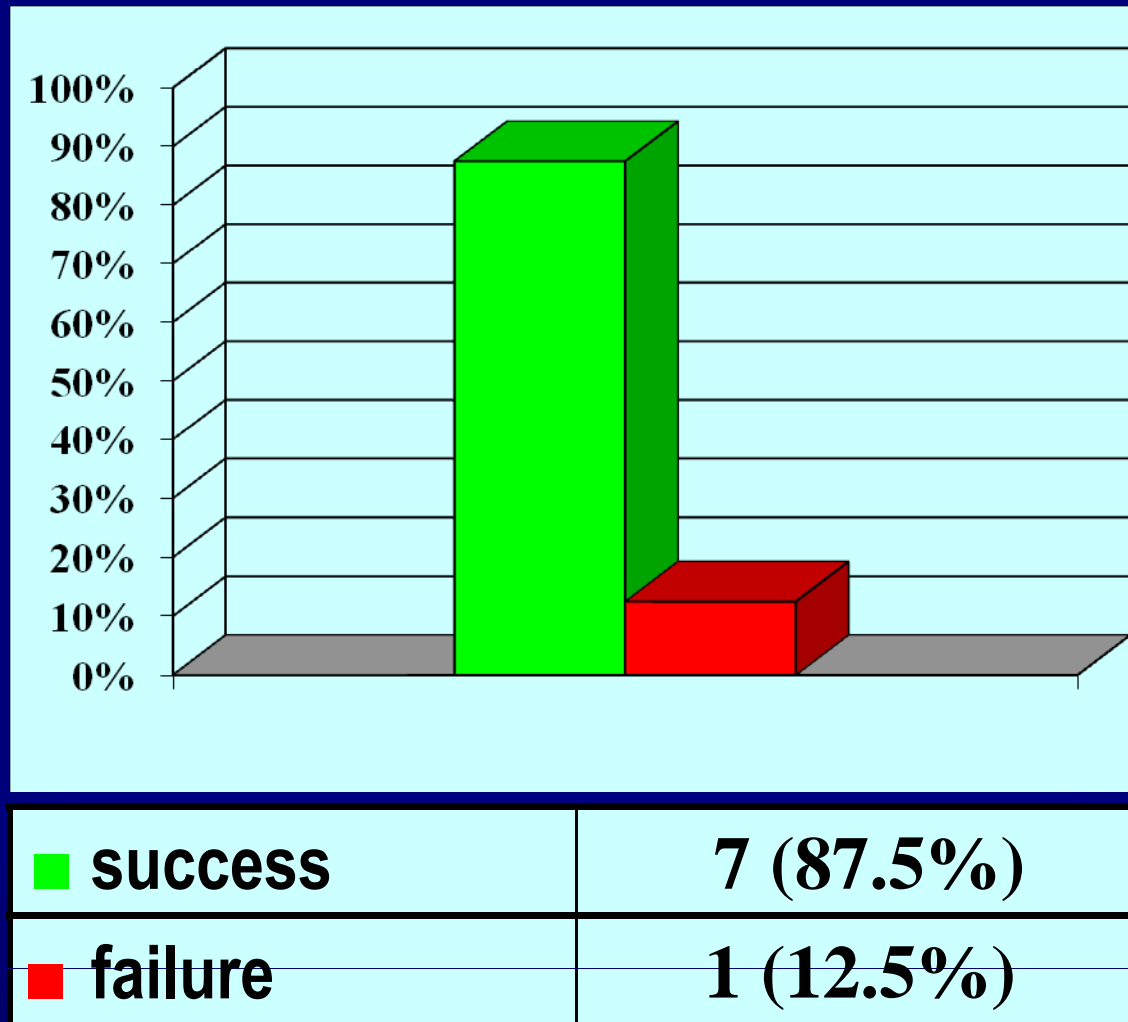


Penile chordee ?



Results of 8 penile end-to-end anastomosis

www.urethralcenter.it



Case history

Patient 64 years old

**Previous history of
cardiovascular
surgery**

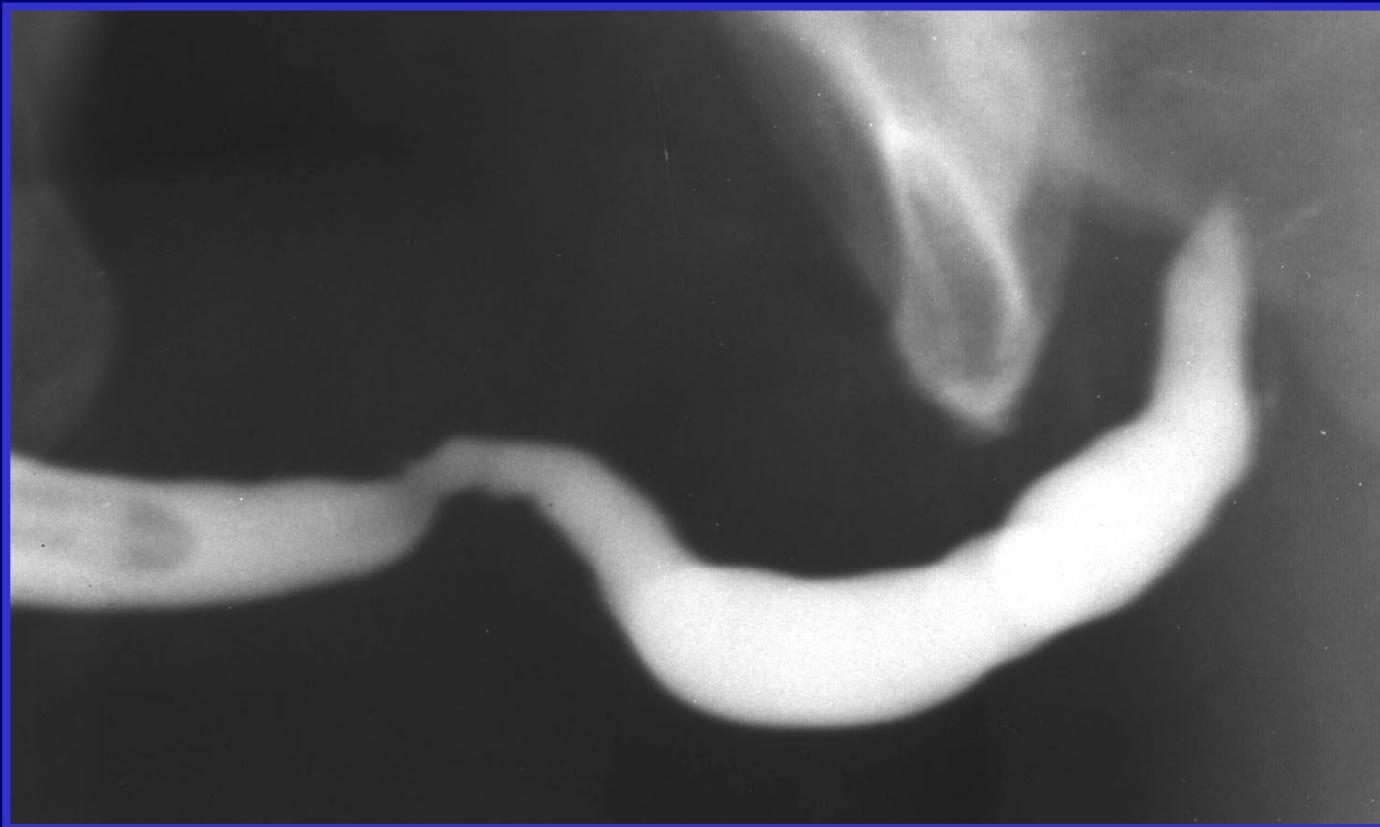


**Two
urethrotomies for
penile urethral
stricture**

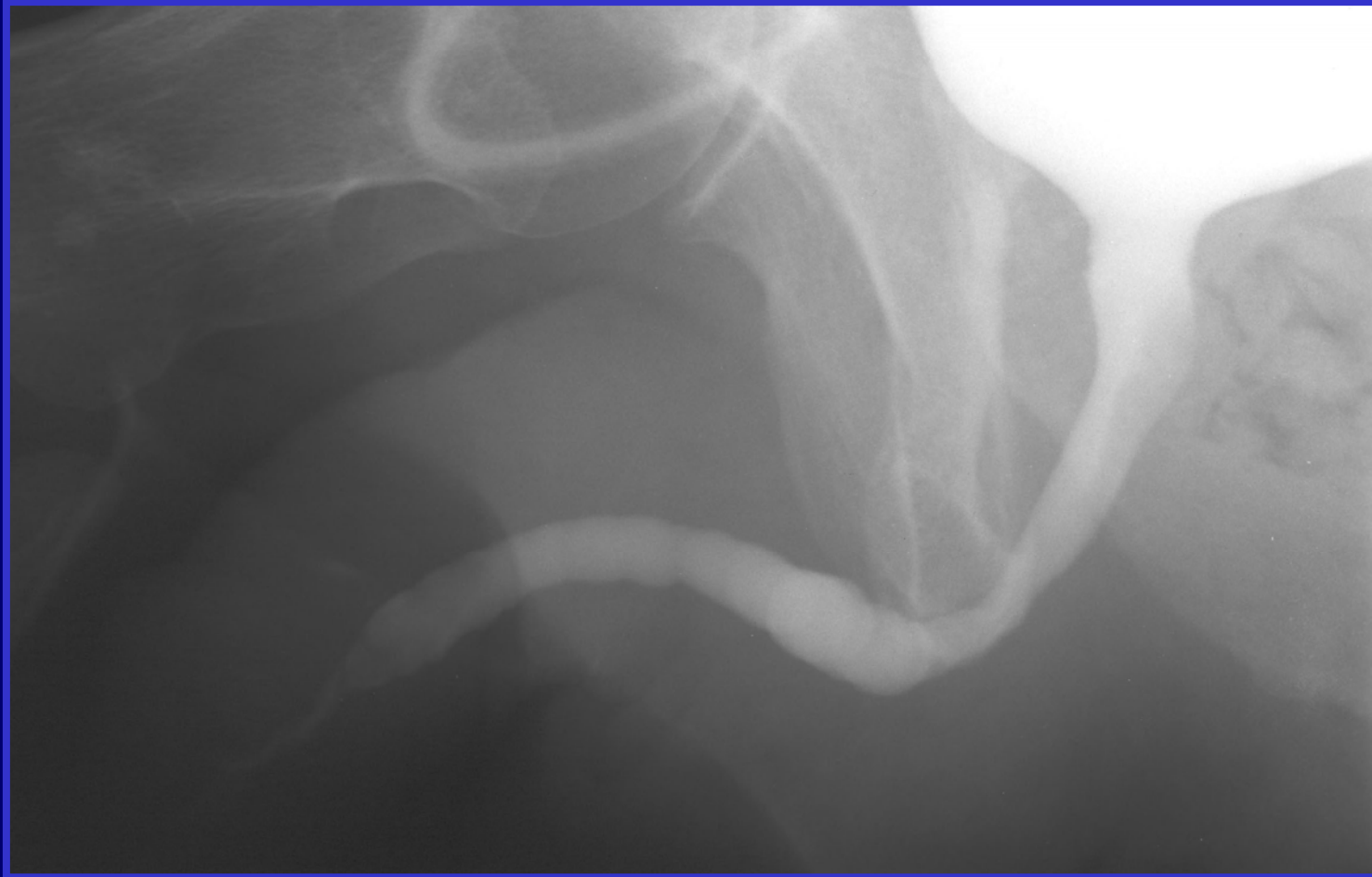
**No genital
lichen sclerosis**



Retrograde urethrography



Voiding cystourethrography



Sonourethrography



Diagnosis

Penile urethral stricture, 3.5 cm in length, recurrent following repeated internal urethrotomies, in patient who underwent cardiovascular surgery

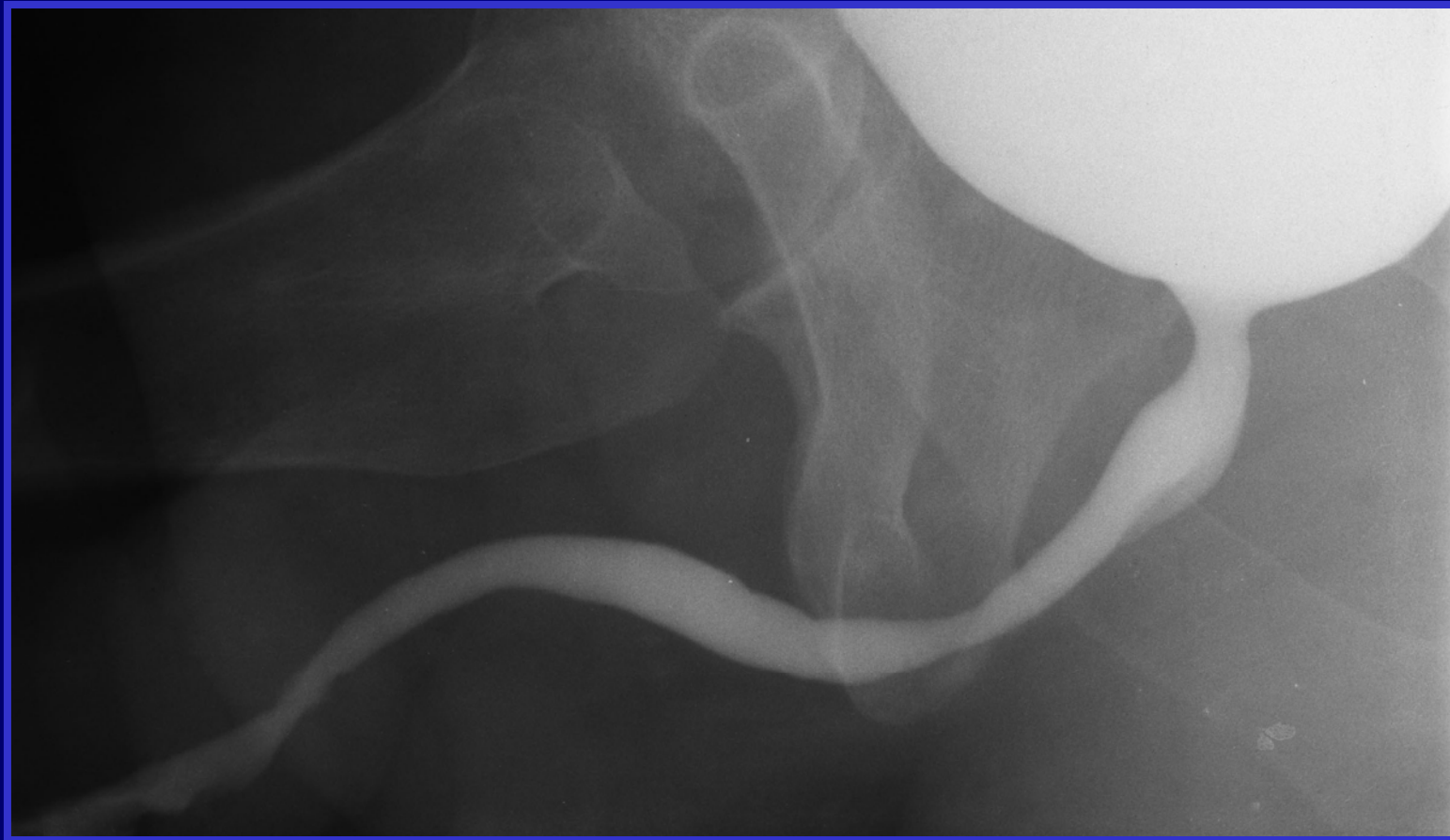


Surgical options

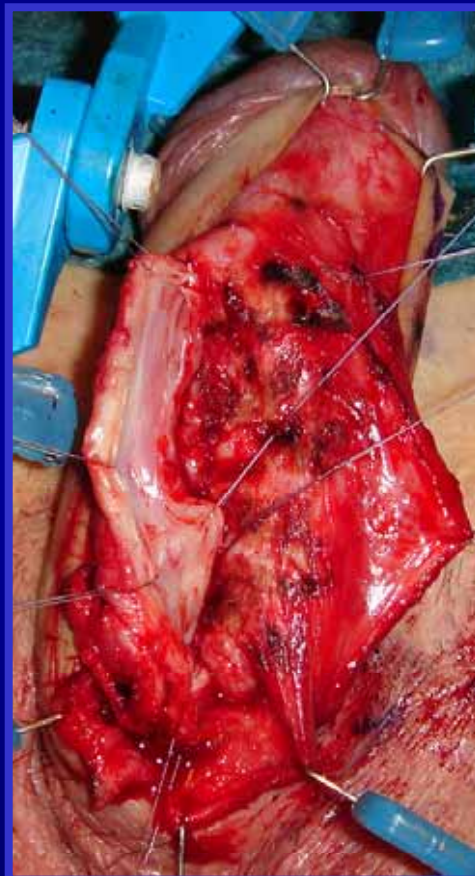
1. Periodic dilation
2. Urethrotomy
3. One-stage penile skin flap urethroplasty
4. One-stage graft (skin/oral mucosa) urethroplasty
5. Johanson's procedure
6. Other



Postoperative urethrography



Modified Orandi's penile skin flap urethroplasty



Modified Orandi's penile skin flap urethroplasty

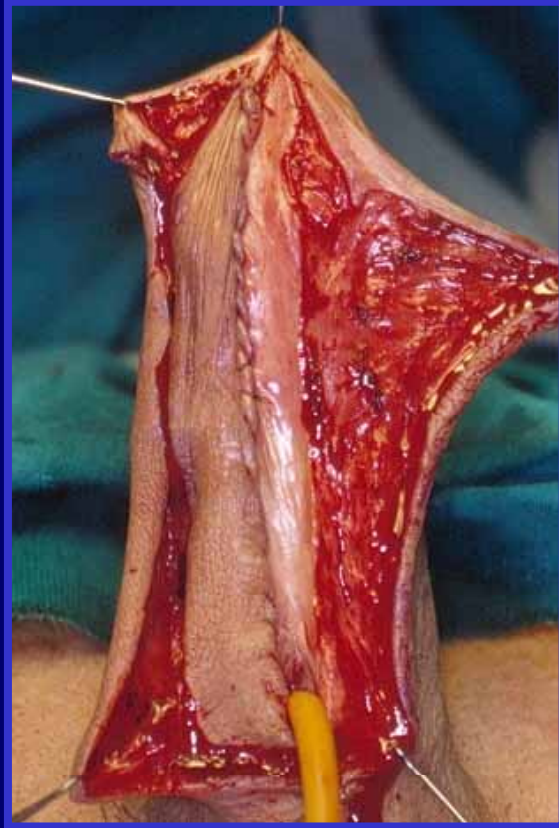


Results of 63 one-stage penile urethroplasty

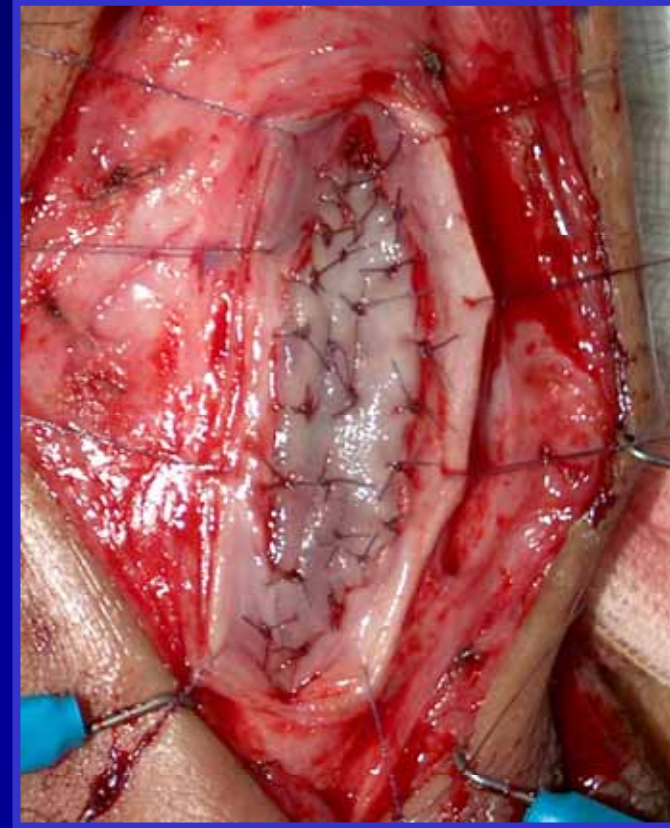
patients	type of repair	success
18	flap	66.7%
22	oral graft	81.8%
23	skin graft	78.3%

www.urethralcenter.it





flap



graft

Basically, the choice between flap or graft one-stage urethroplasty should be made according to the status of the urethral plate and according to the surgeon background, training and preference

Case history

Patient 35 years old

**No previous history of
urologic diseases or
urethral
instrumentation**

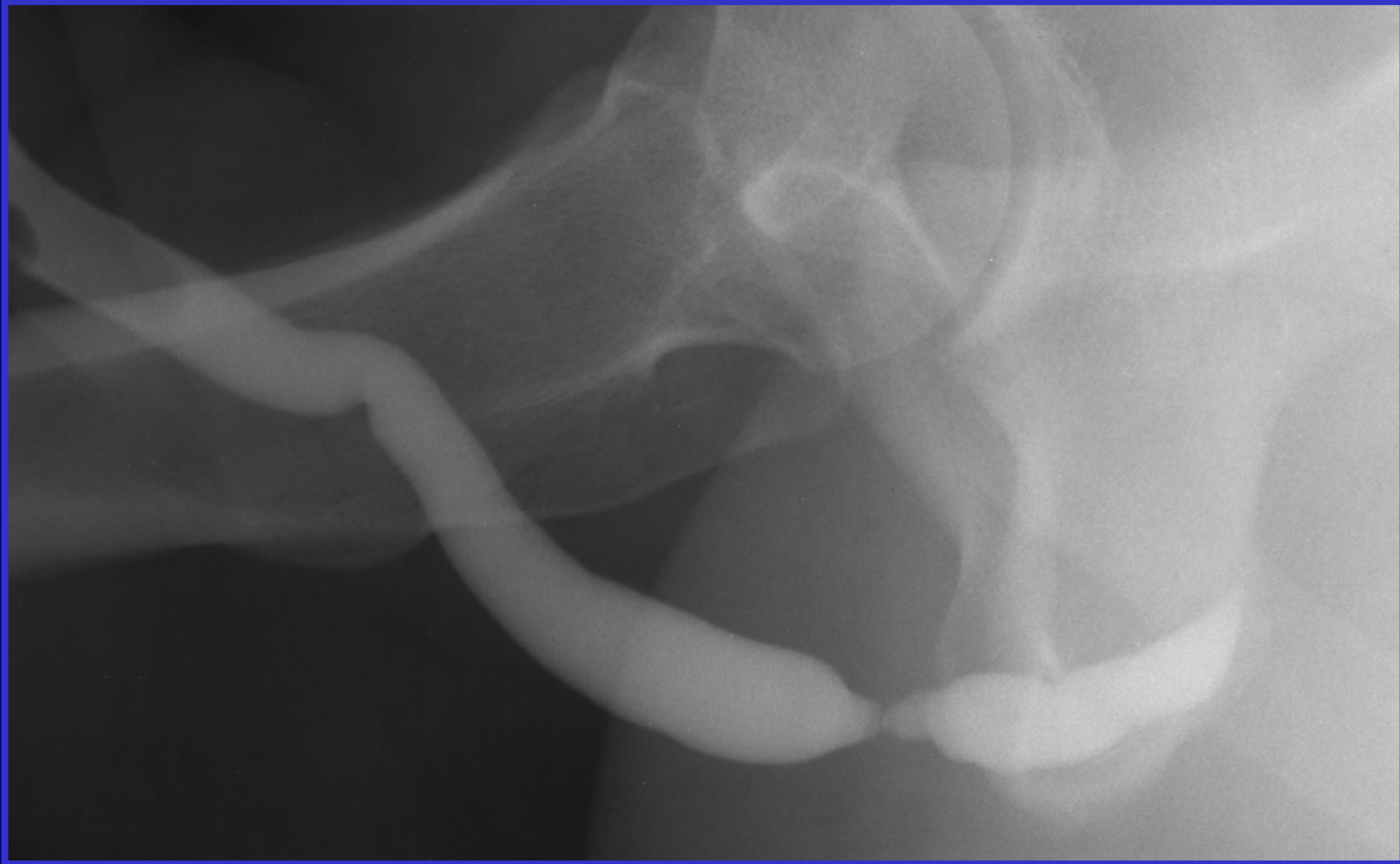


**In 2005, acute
urinary retention
treated by
bouginage and
medical therapy**

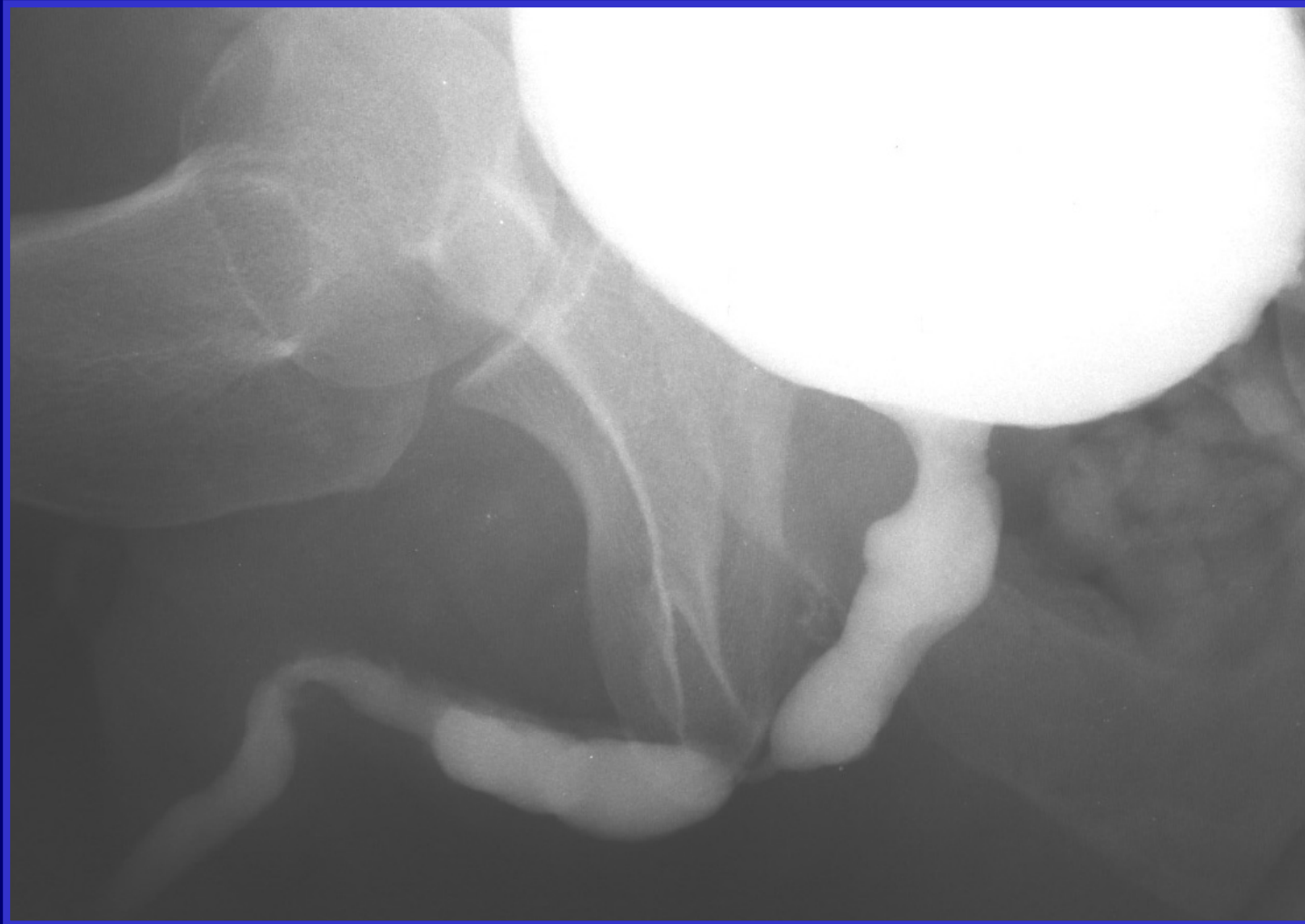
**No genital lichen
sclerosus**



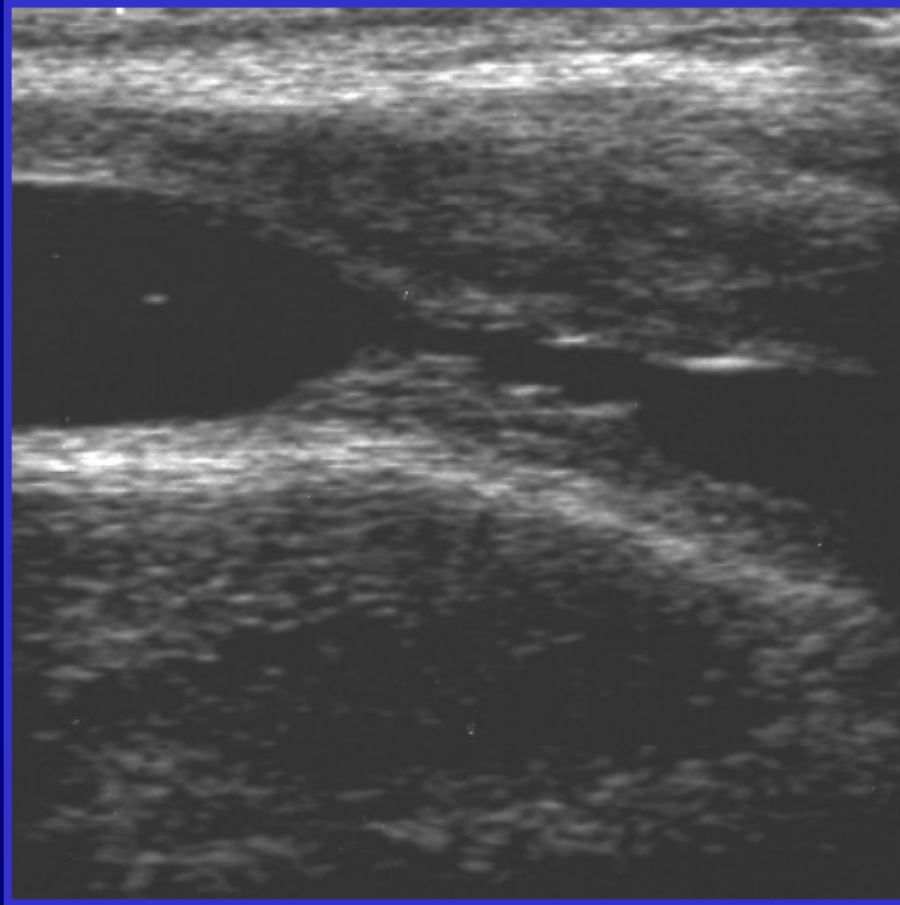
Retrograde urethrography



Voiding cystourethrography



Sonourethrography



Diagnosis

**Bulbar urethral stricture, 2.5 cm in length,
of unknown etiology**

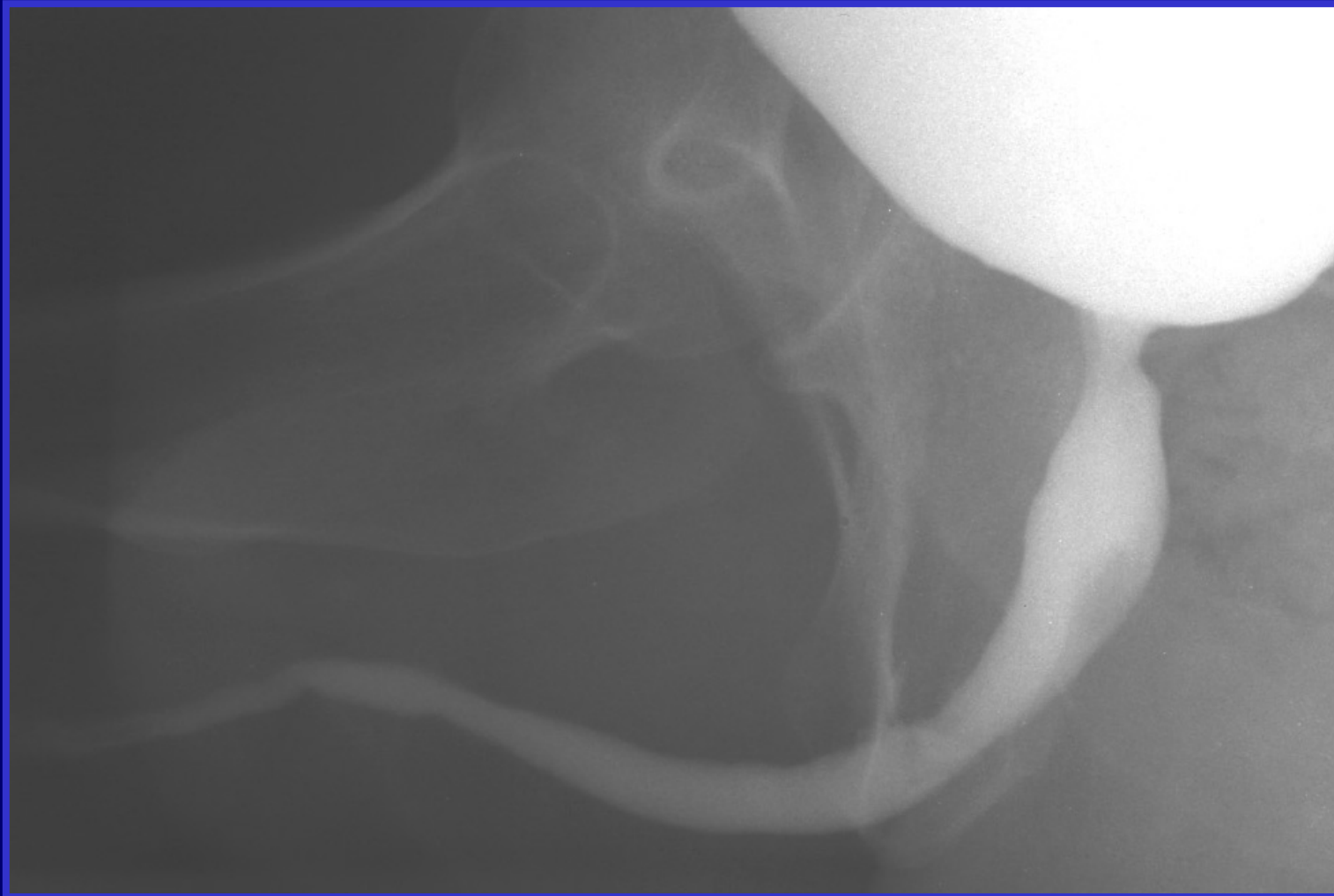


Surgical options

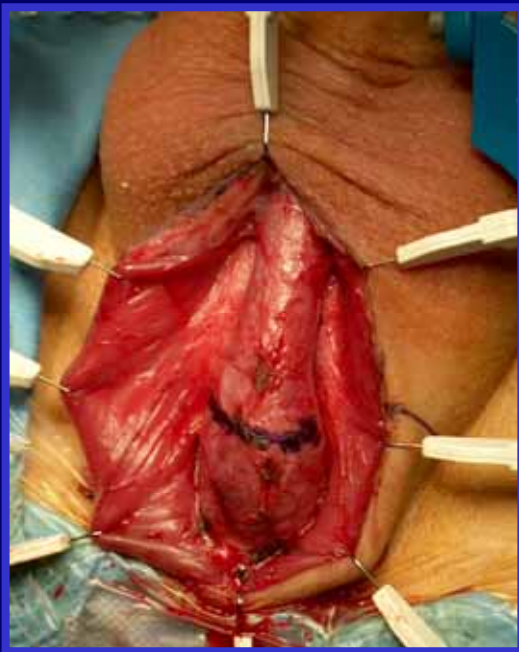
1. Periodic dilation
2. Urethrotomy
3. End-to-end anastomosis
4. One-stage onlay graft urethroplasty
5. Two-stage procedure
6. Other



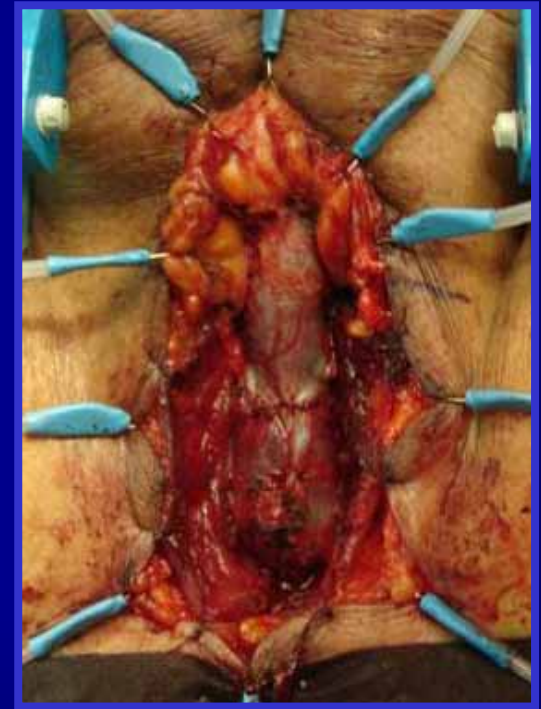
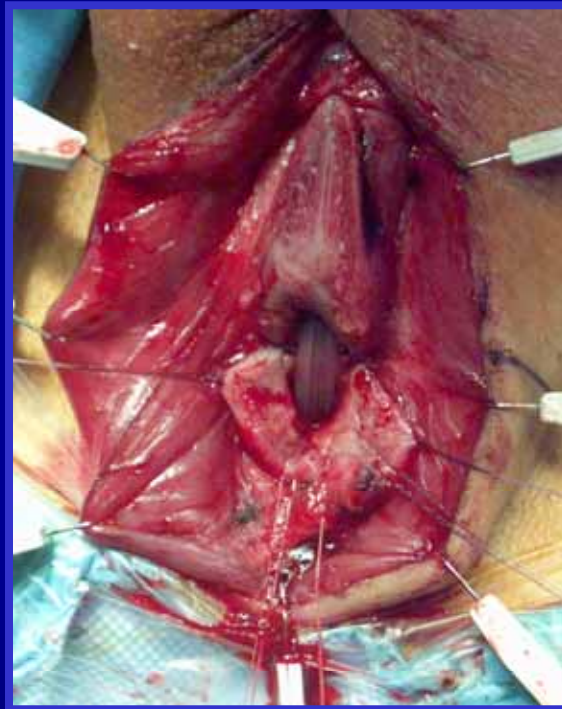
Postoperative urethrography



End-to-end anastomosis

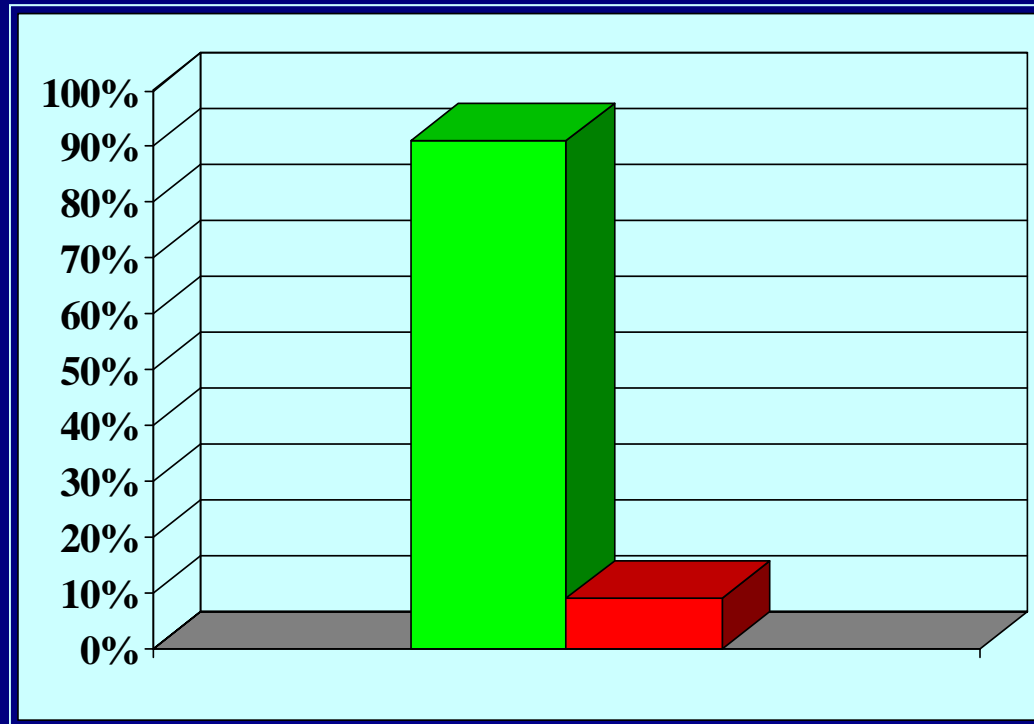


End-to-end anastomosis



Results of 153 end-to-end anastomosis

Follow-up: 12 - 218 months (mean 68)

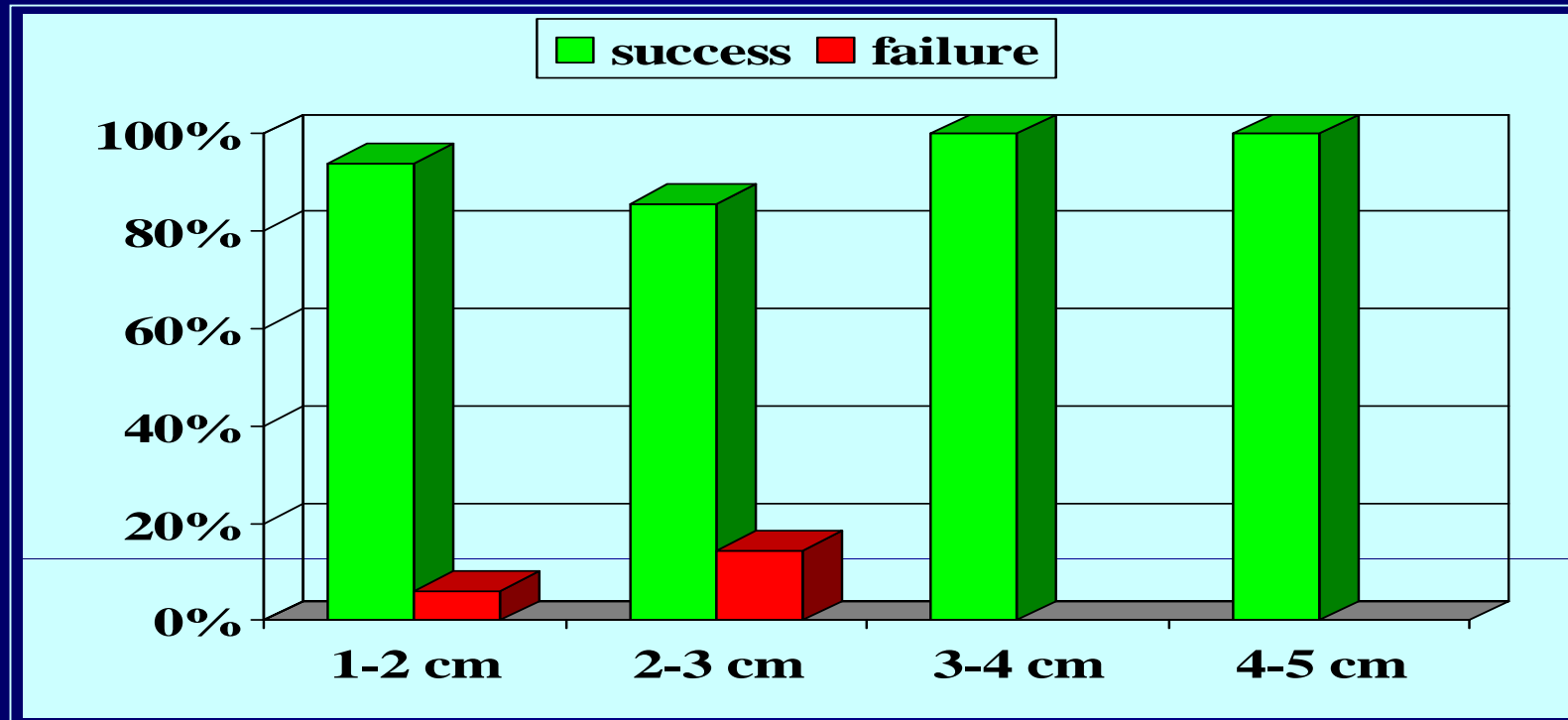


■ success	90.8%
■ failure	9.2%

Barbagli G. et al, J Urol 2007

Outcome according to the stricture length

www.urethralcenter.it



	1-2 cm	2-3 cm	3-4 cm	4-5 cm
■ success	93.8%	85.7%	100%	100%
■ failure	6.2%	14.3%		

Case history

Patient 67 years old



Obesity, diabetes, cerebrovascular stroke, amputation of toes of left foot (therapy: **insulin, lasix, heparin**)

Previous circumcision, periodic dilation, repeated urethrotomies

Lichen sclerosis of genitalia and meatal stenosis

Retrograde urethrography



Voiding cystourethrography



Diagnosis

Panurethral stricture, recurrent following repeated internal urethrotomies, in patient with genital lichen sclerosis

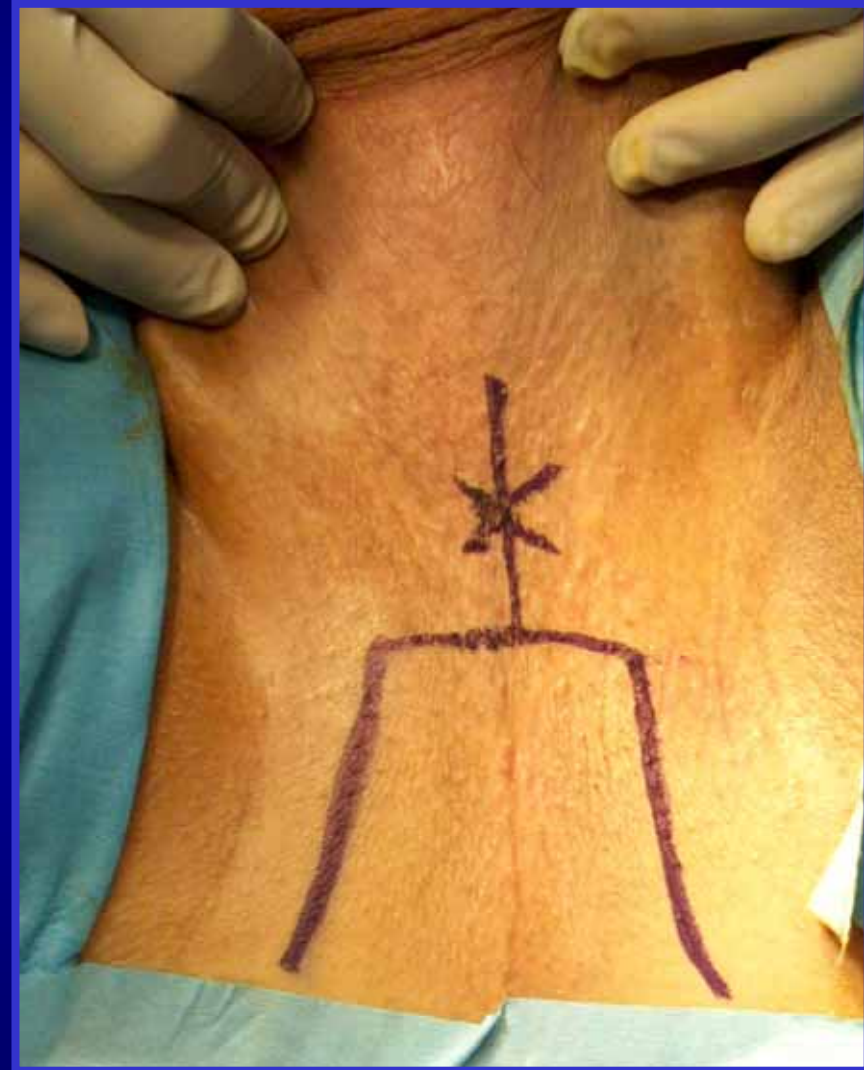
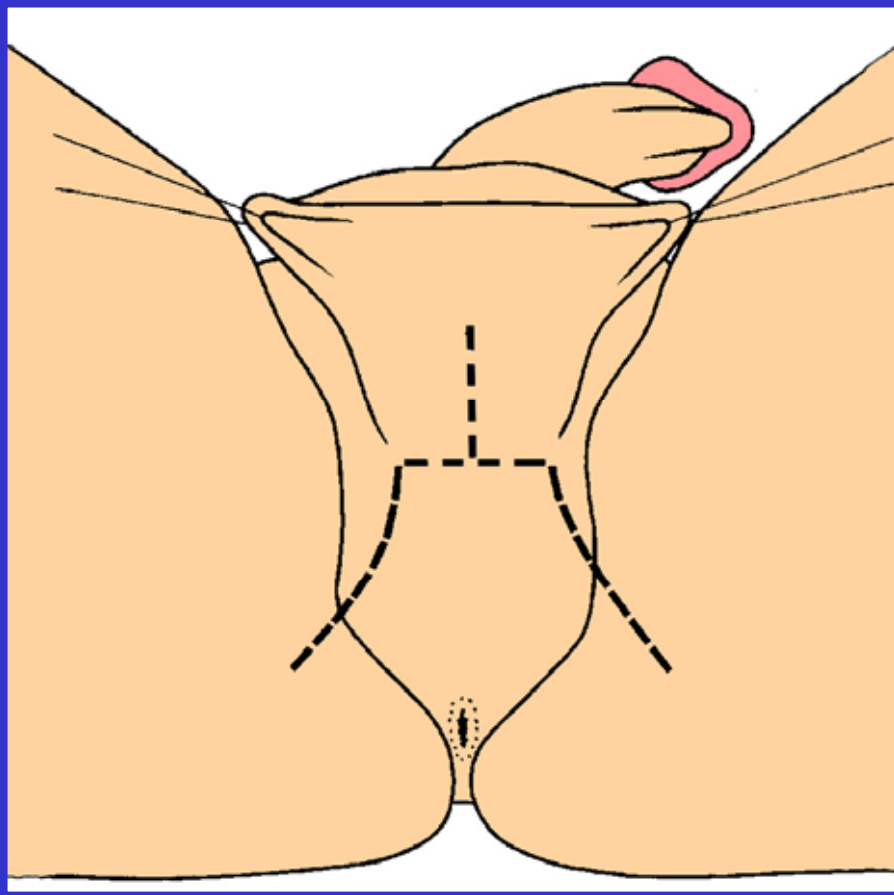


Surgical options

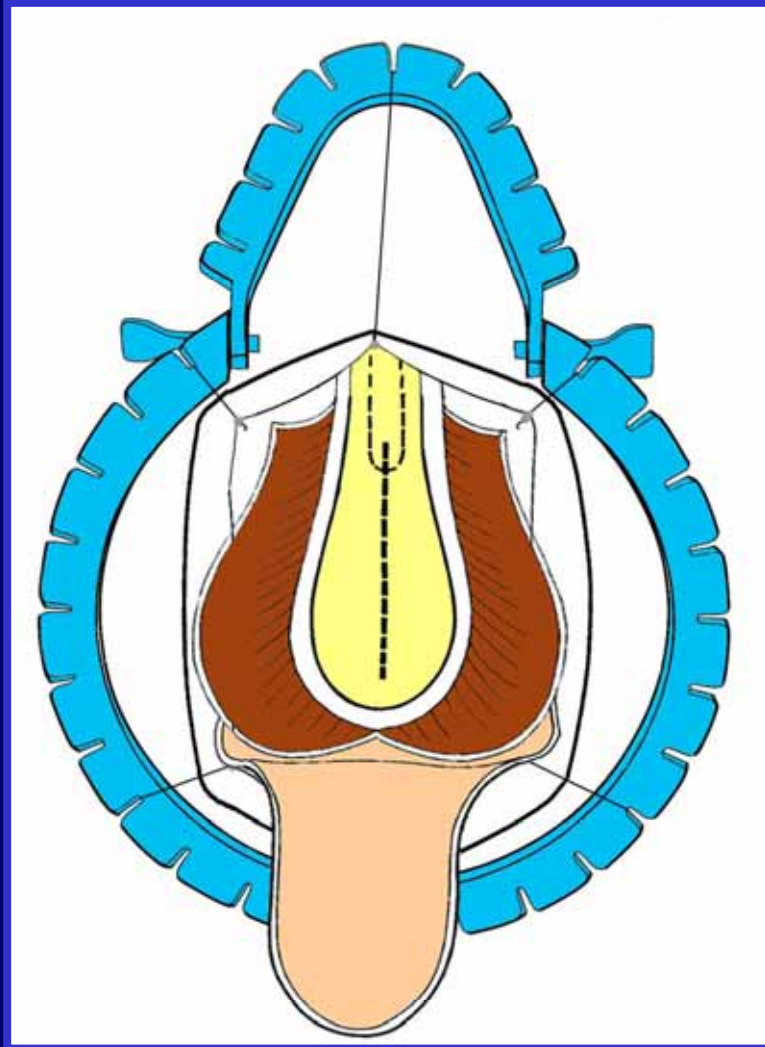
- Periodic dilation
- Urethrotomy
- Kulkarni's one-stage graft oral mucosal graft urethroplasty
- Definitive perineal urethrostomy
- Other



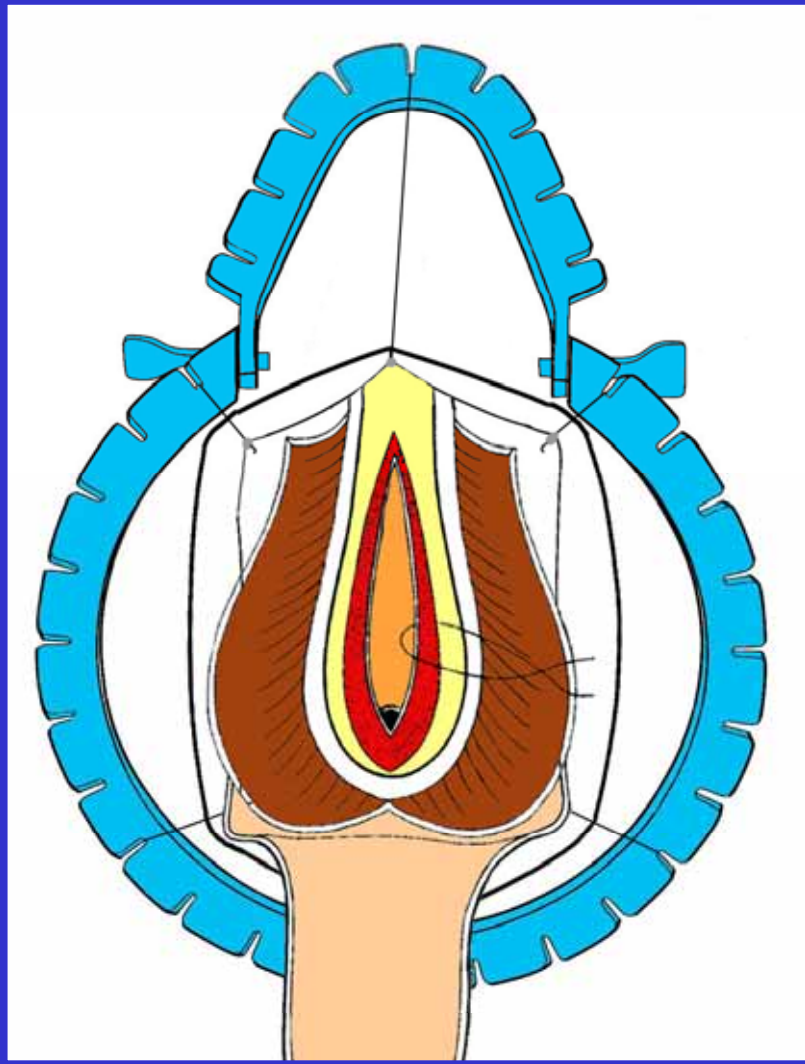
Definitive perineal urethrostomy



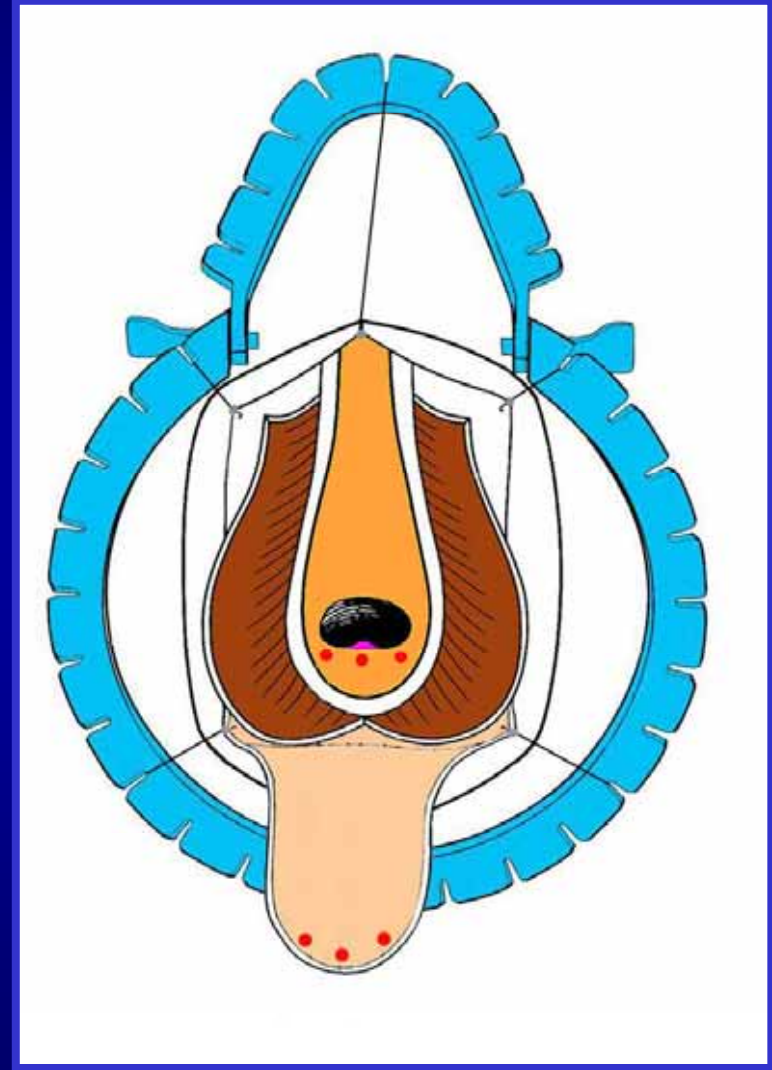
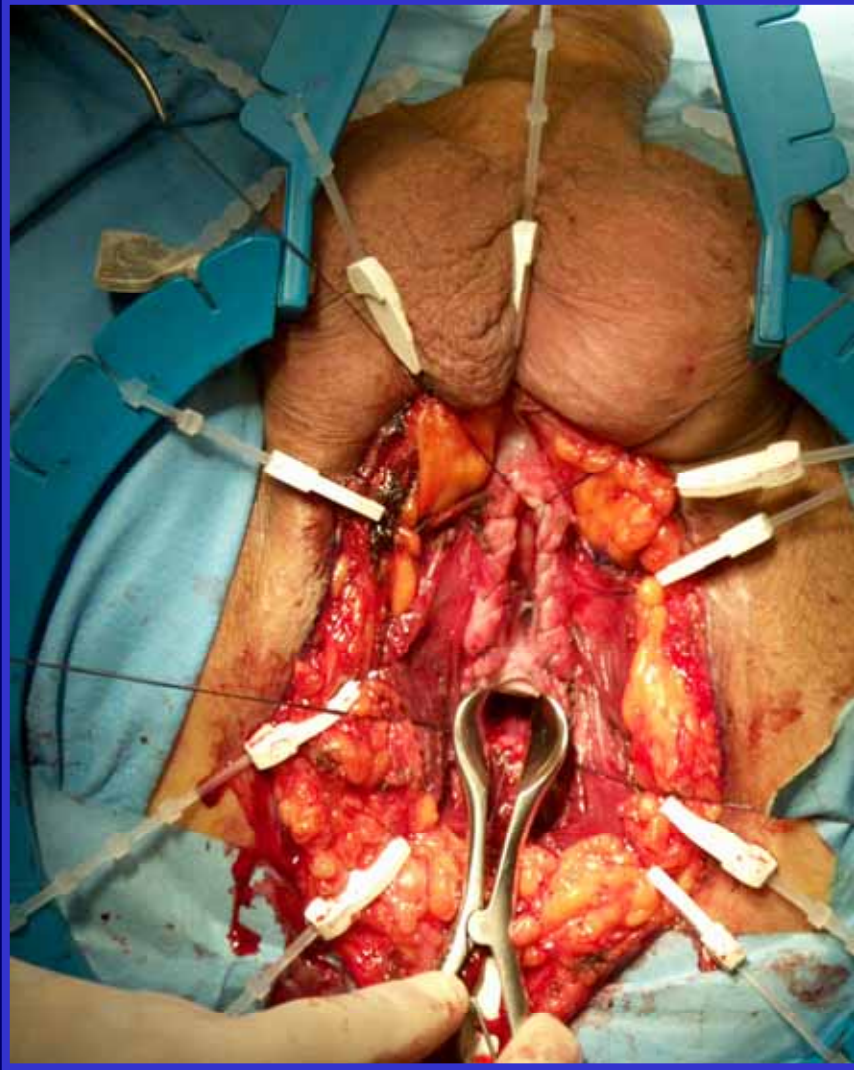
Definitive perineal urethrostomy



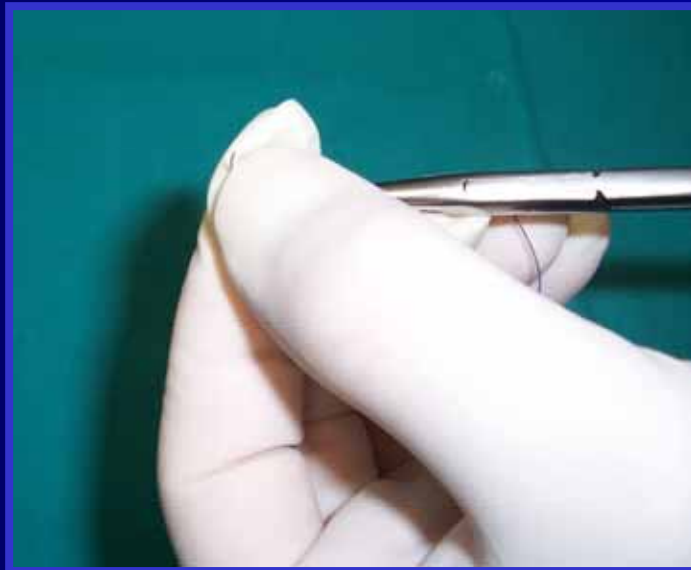
Definitive perineal urethrostomy



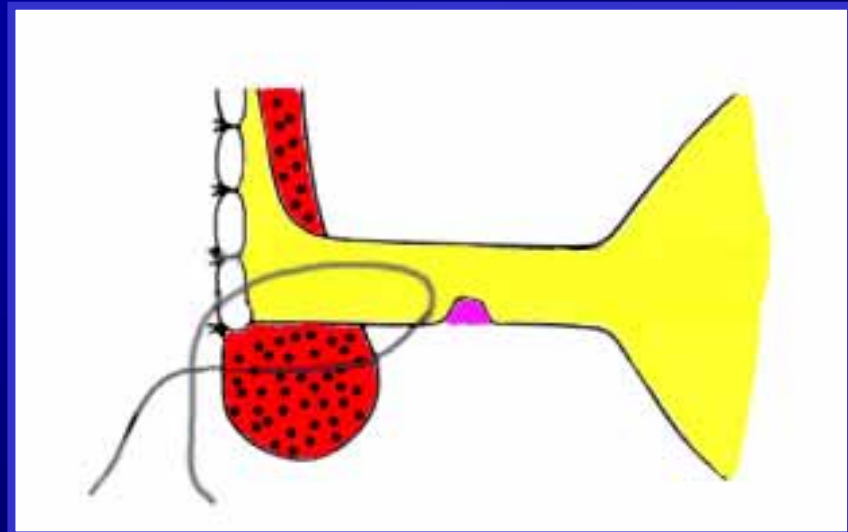
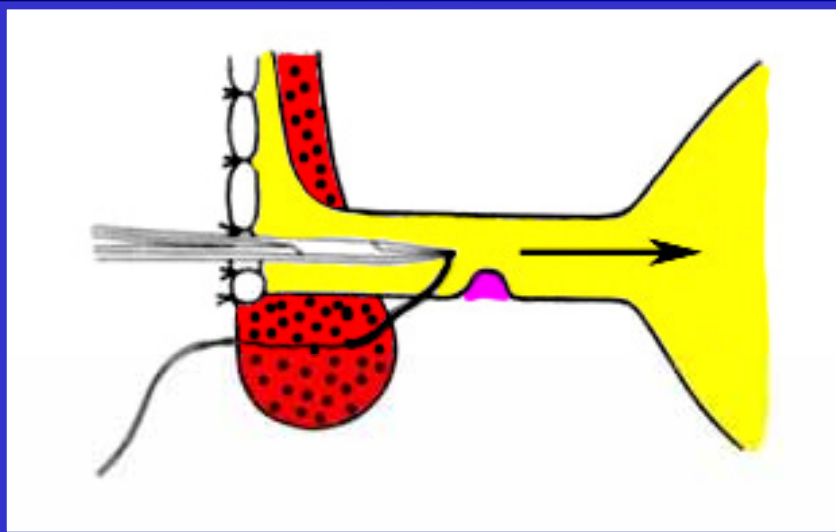
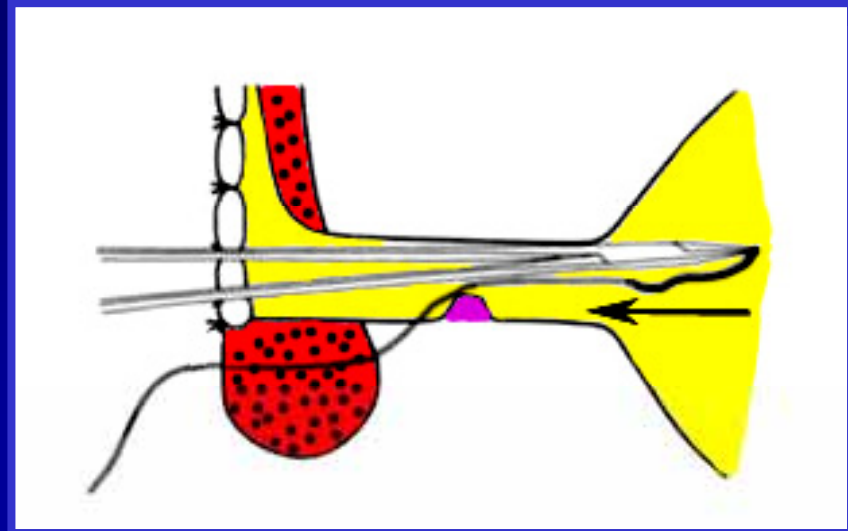
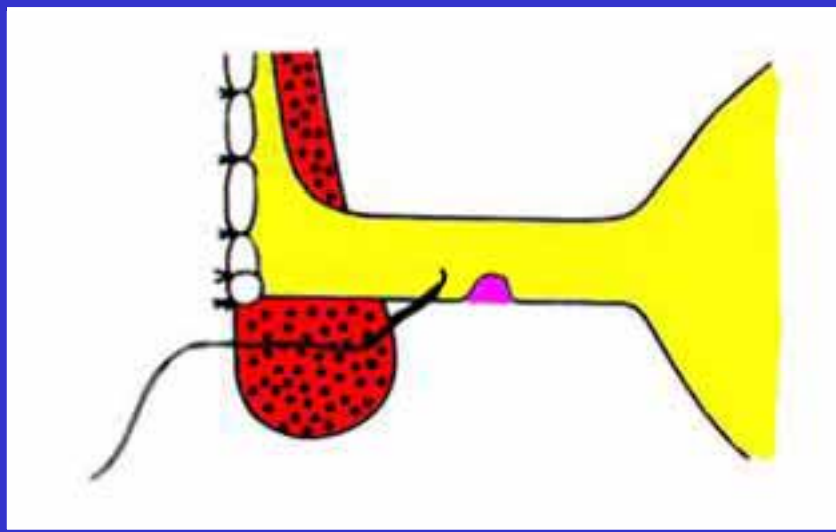
Definitive perineal urethrostomy



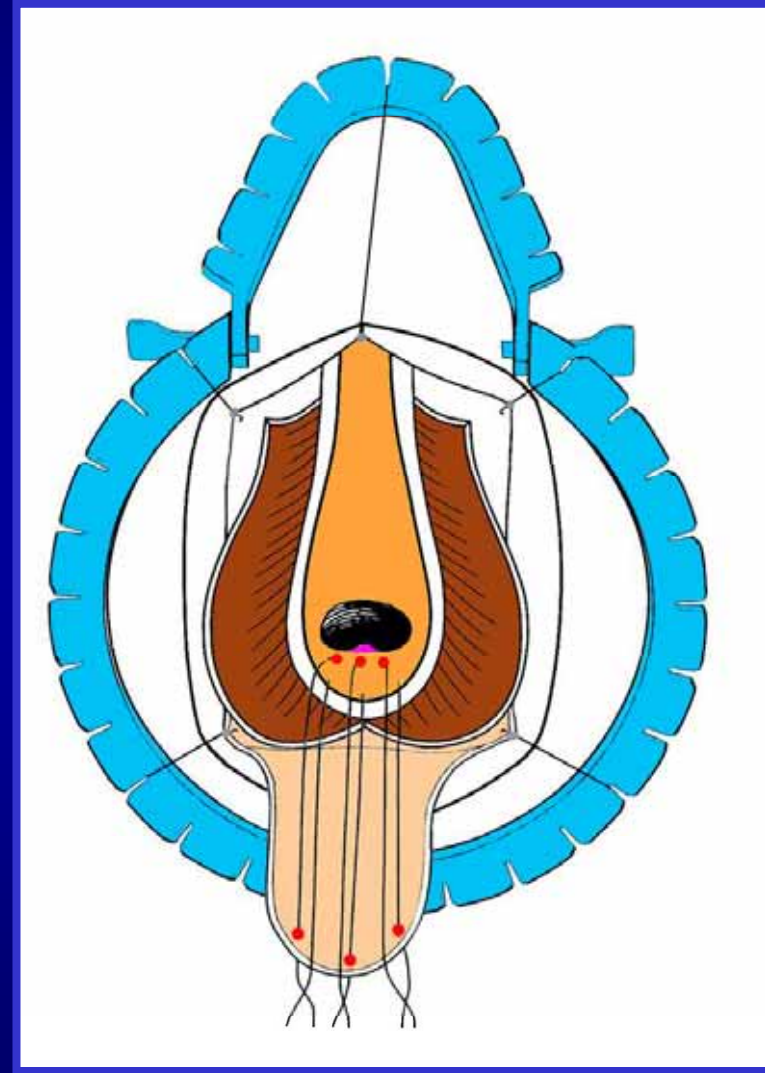
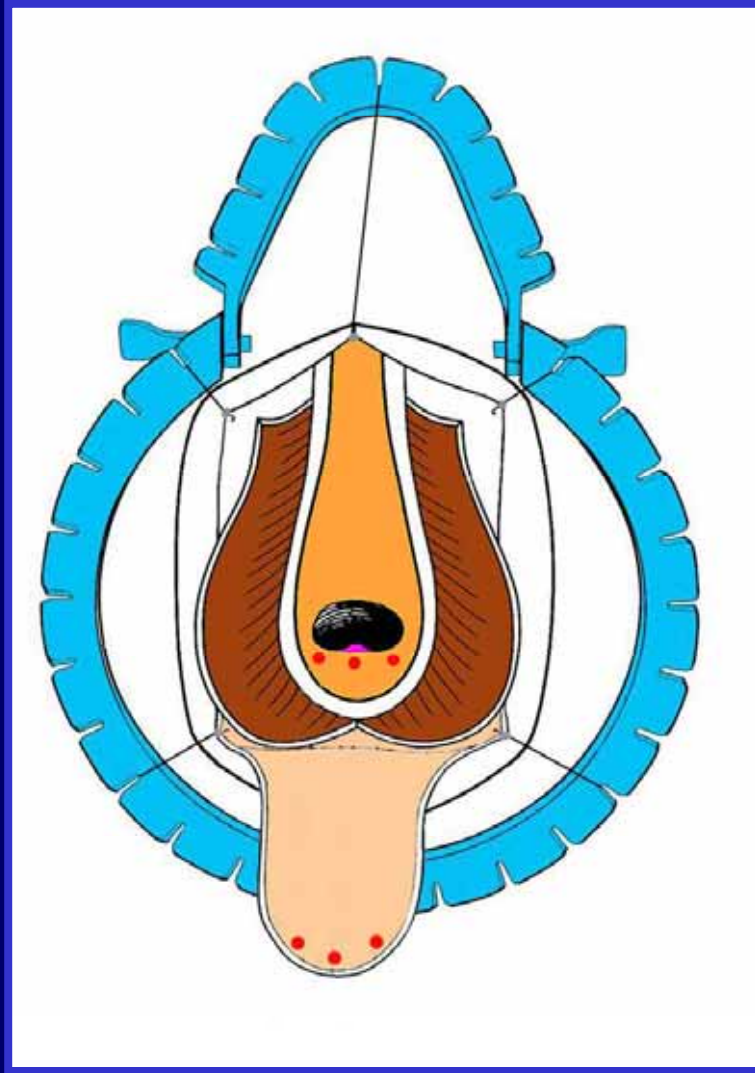
Webster's technique



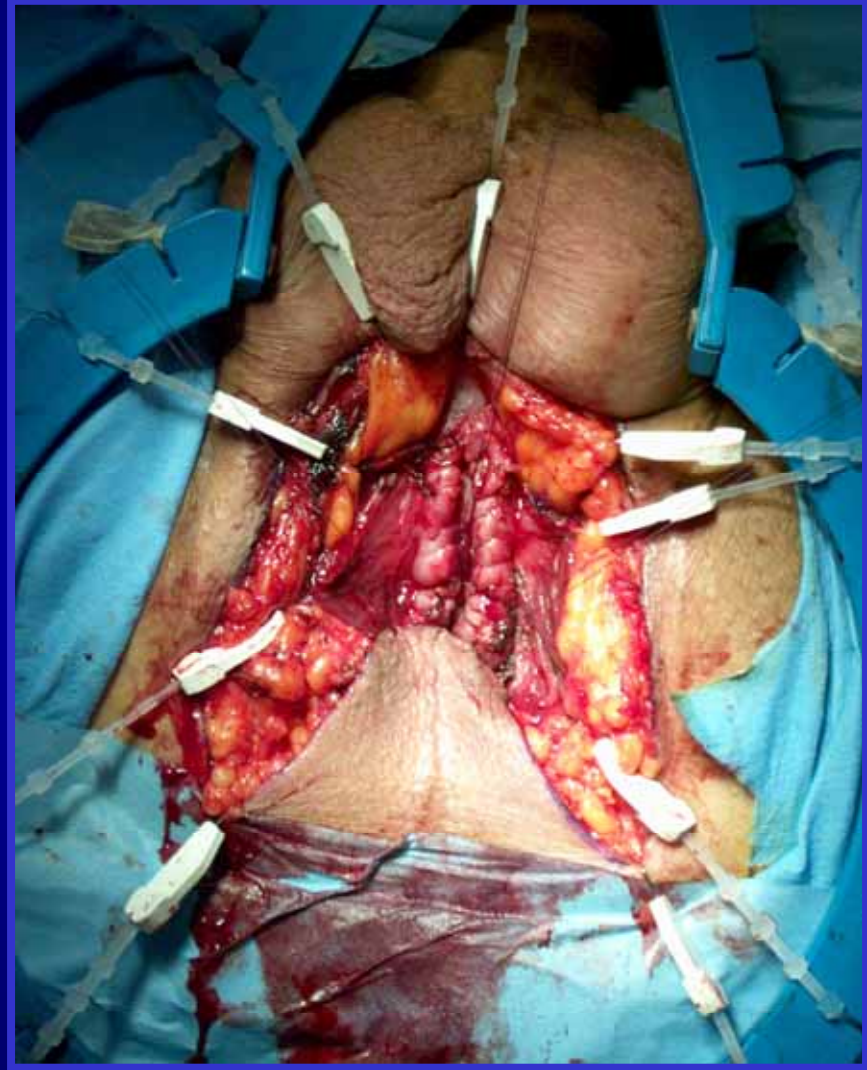
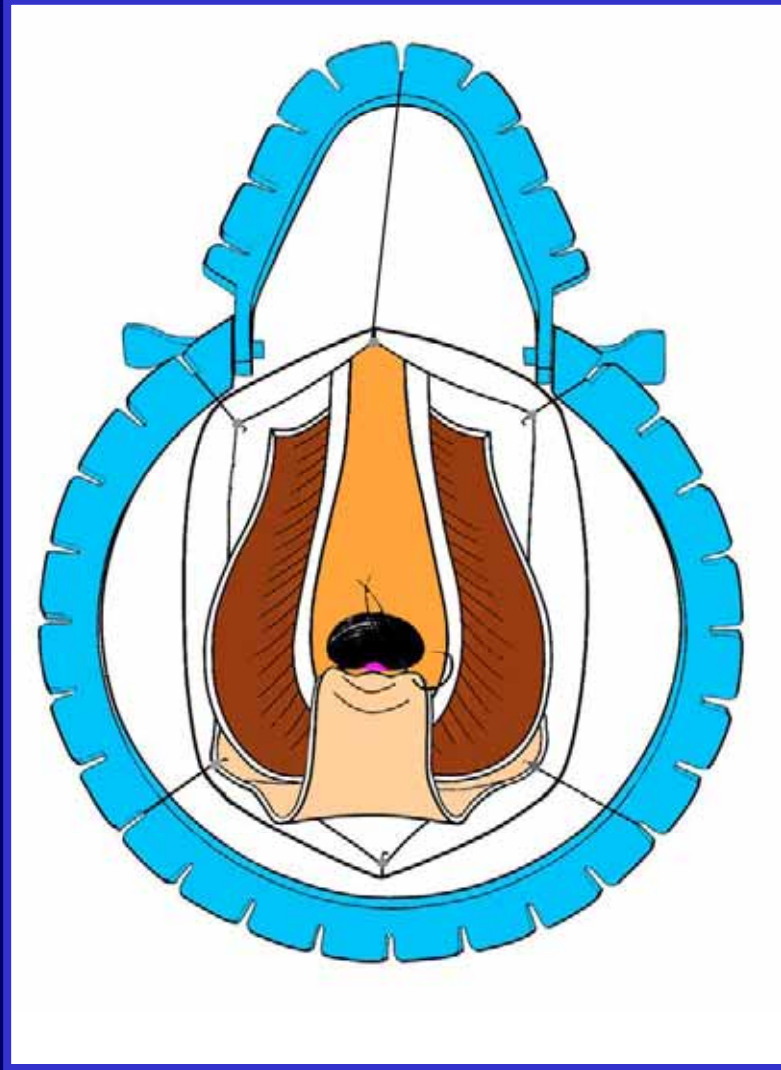
Webster's technique



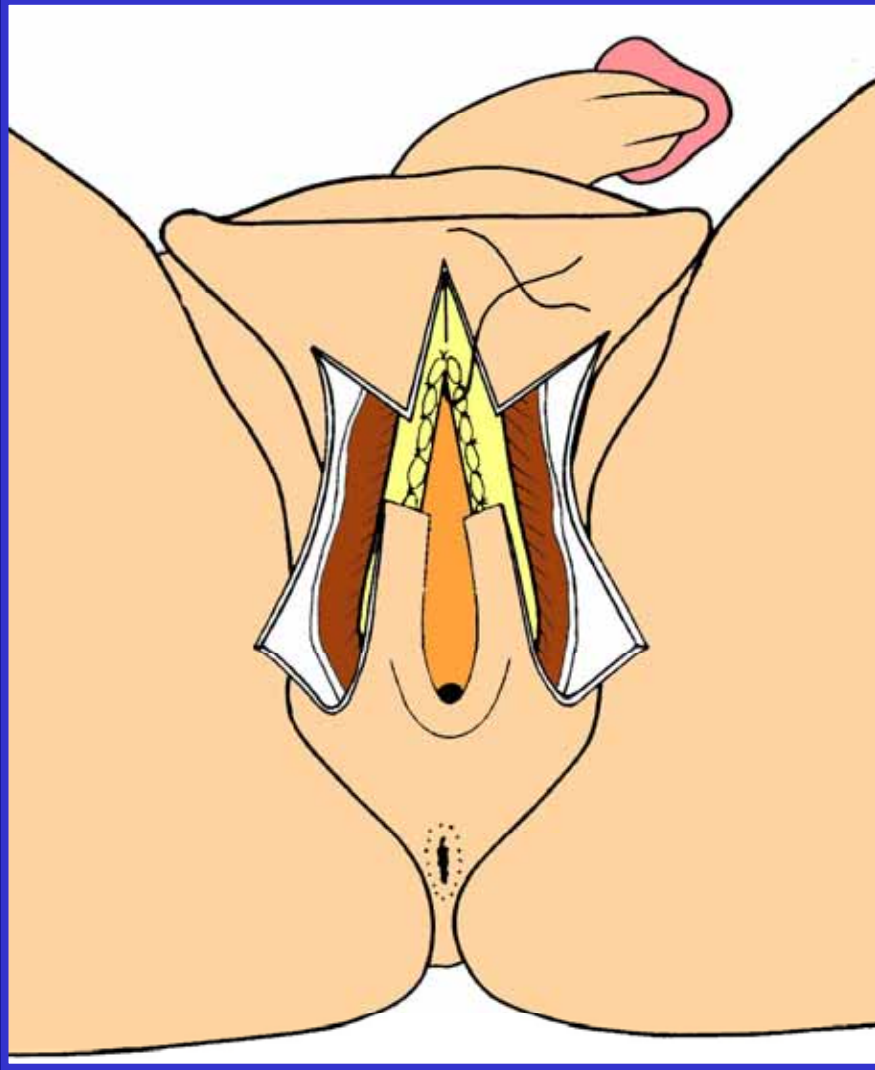
Definitive perineal urethrostomy



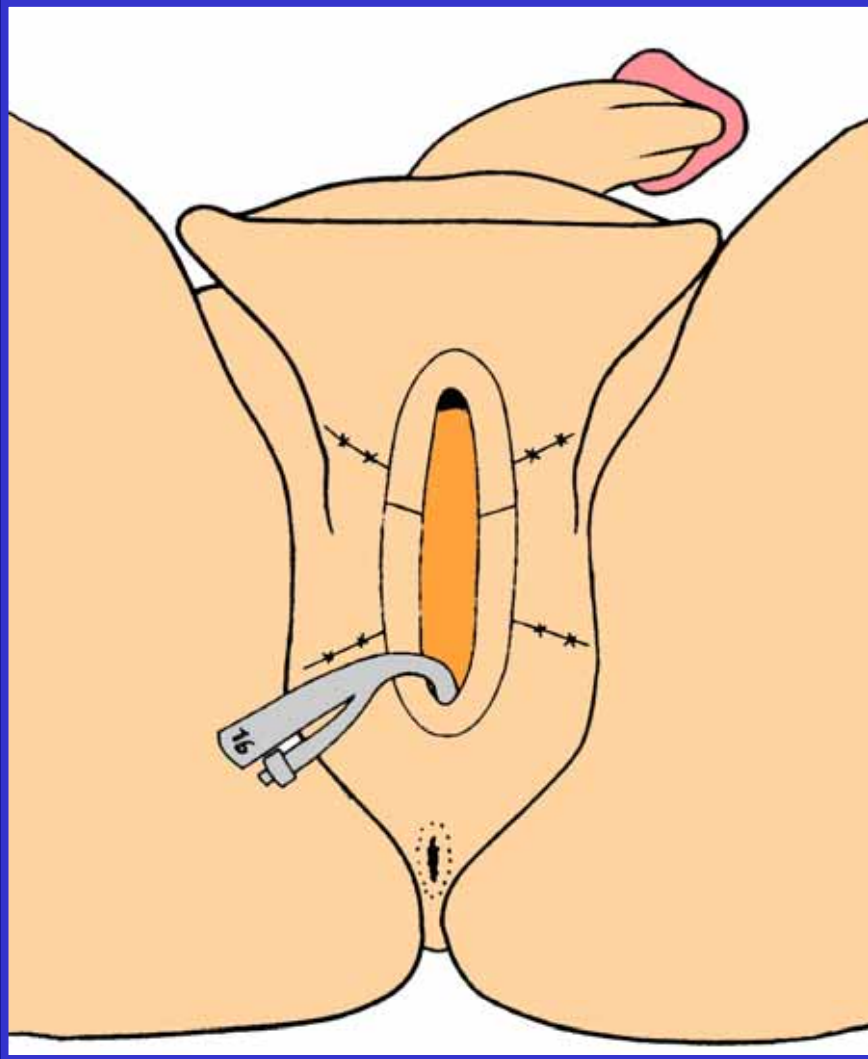
Definitive perineal urethrostomy



Definitive perineal urethrostomy



Definitive perineal urethrostomy



Results



Round table



**Thank you for your kindness, your
professionality and your honesty**

