

CENTER FOR RECONSTRUCTIVE URETHRAL SURGERY



GUIDO BARBAGLI, M.D.
Arezzo - Italy

e-mail: info@urethralcenter.it

Websites: www.uretra.it
www.urethralcenter.it



Center for Reconstructive Urethral
Surgery - Arezzo - Italy

SAVA PEROVIC FOUNDATION

CENTER FOR GENITO-URETHRAL
RECONSTRUCTIVE SURGERY

BORISAVLJEVICEVA STR. 58
11000 BELGRADE, SERBIA



HANDS ON TRAINING

ALL PARTICIPANTS WILL BE INCLUDED
AS MEMBER OF THE SURGERY TEAM

BELGRADE, FEBRUARY 23-26, 2015

1ST INTERNATIONAL COURSE ON URO-GENITAL RECONSTRUCTIVE SURGERY

— LIVE SURGERY AND LECTURES —

e-mail: info@urethralcenter.it

Websites: www.uretra.it
www.urethralcenter.it

Urethral strictures: Etiology, terminology, and diagnosis

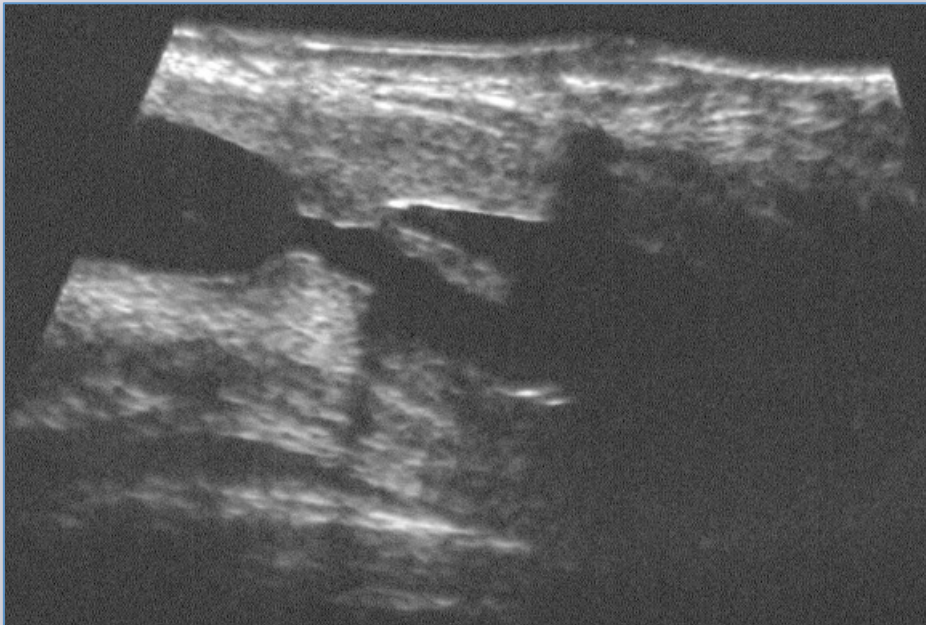


e-mail: info@urethralcenter.it

Websites: www.uretra.it
www.urethralcenter.it

Etiology of urethral stricture

CONGENITAL



Cobb's collar – J Urol 1968; 99: 629-631

Etiology of urethral stricture

IDIOPATHIC



Etiology of urethral stricture

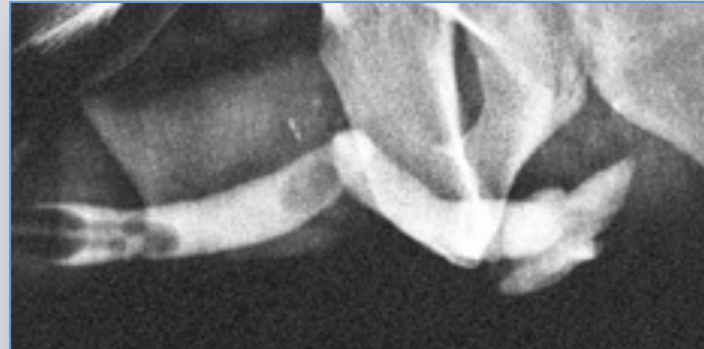
TRAUMATIC



Previous history of perineal trauma

Etiology of urethral stricture

TRAUMATIC



Etiology of urethral stricture

INSTRUMENTATION



TURP

TURB

TUIP

HOLEP

URETHROSCOPY

CYSTOSCOPY



Etiology of urethral stricture

CATHETER and ISCHEMIA



Blood pressure < 60 mmHg

Patients in resuscitation room

Patients bleeding after surgery

**Patients who underwent
cardiovascular surgery**

Etiology of urethral stricture

INFECTION



Neisseria Gonorrhoeae

65.5% of cases in Nigeria – 82% of cases in Sudan

Etiology of urethral stricture

FAILED HYPOSPADIAS REPAIR



“ Surgery for failed hypospadias repair is a growing industry “

AR. Mundy

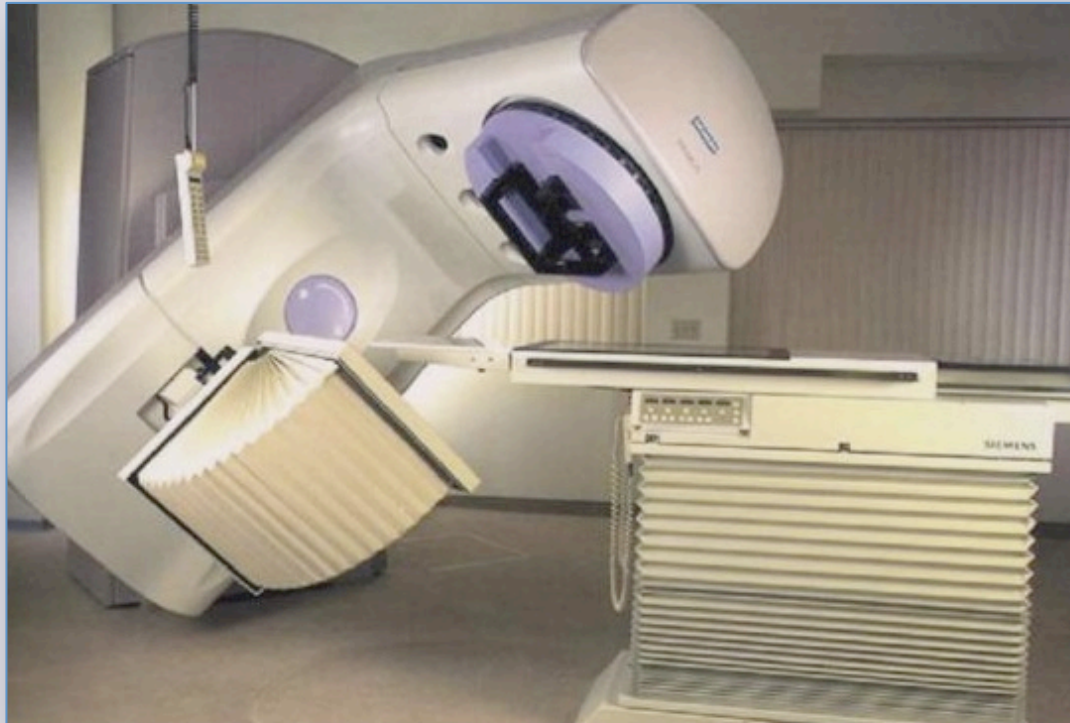
Etiology of urethral stricture

LICHEN SCLEROSUS



Etiology of urethral stricture

RADIOTHERAPY



High incidence is reported in studies from USA

e-mail: info@urethralcenter.it

Websites: www.uretra.it
www.urethralcenter.it

Etiology of urethral stricture

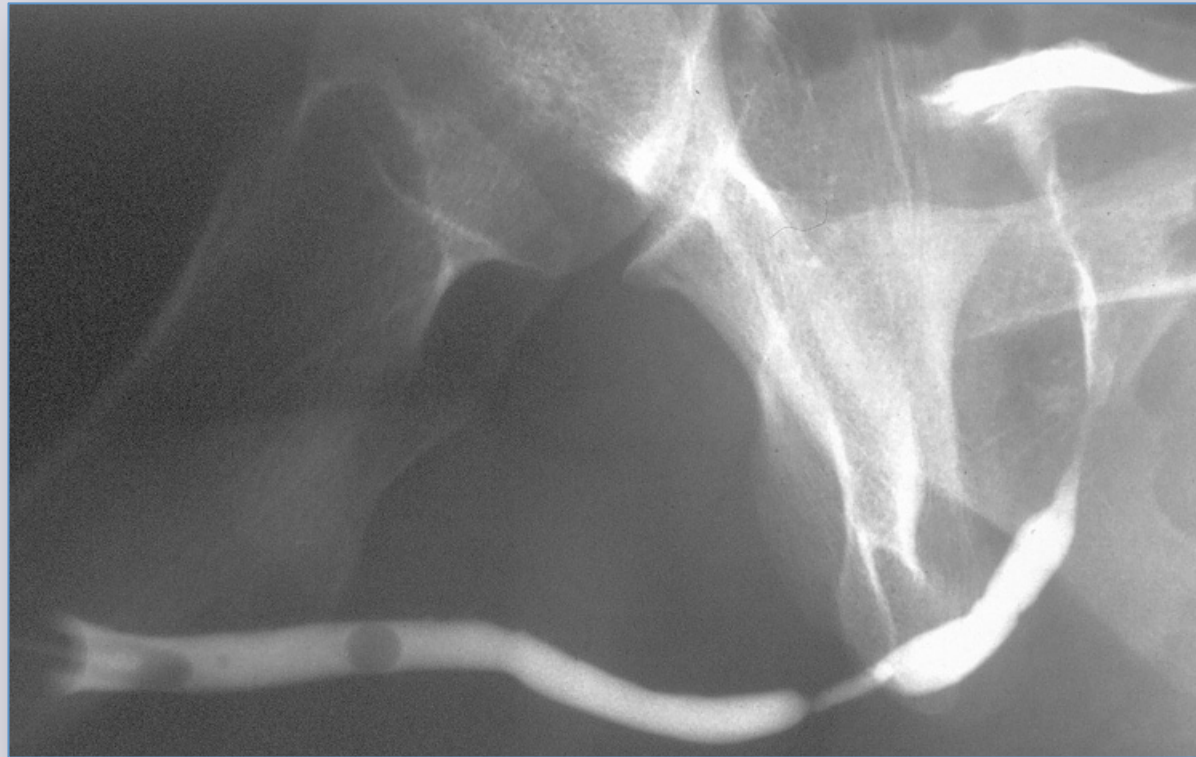
RADICAL PROSTATECTOMY



The incidence is greatly reduced after the use of robot

Terminology of urethral stricture

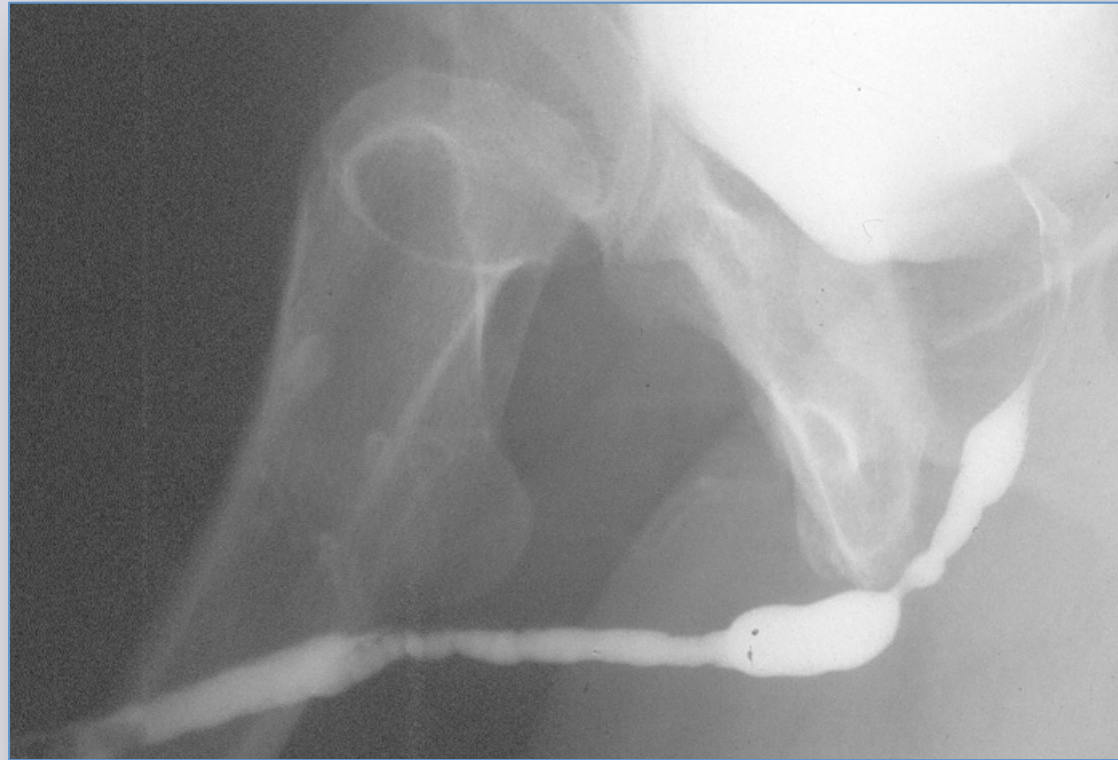
URETHRAL STRICTURE



**Single – short < 2cm - no previous treatment -
no associated local adverse conditions**

Terminology of urethral stricture

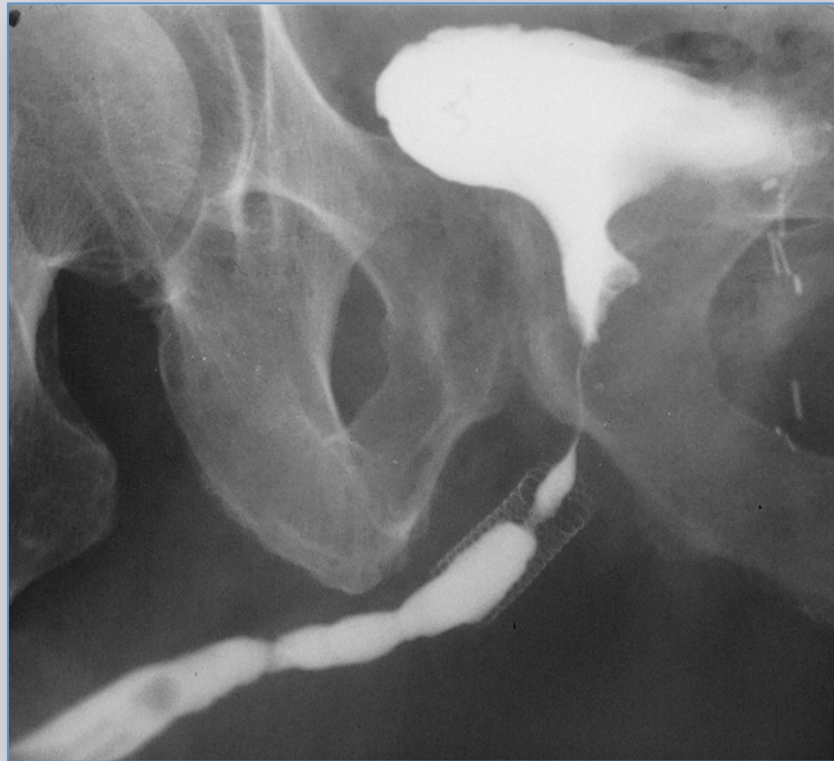
URETHRAL STRICTURE DISEASE



Double – long > 2cm – previous failed treatment

Terminology of urethral stricture

COMPLEX URETHRAL STRICTURE DISEASE



Post



TURP

TUIP

HOLEP

Stent

Abscess

Fistula

False passage

Cancer

**open
bladder
neck**

Stricture associated with local adverse conditions

Terminology of urethral stricture

FAILED HYPOSPADIAS REPAIR



Urethral stricture disease associated with complex congenital disorder of the genitalia

Terminology of urethral stricture

LICHEN SCLEROSUS



Urethral stricture disease associated with complex immunological disorder of the genitalia

Diagnosis of urethral stricture

1

Symptoms (obstruction – infection – irritation)

Signs (skin lesions – prior surgery – abscess)

2

Uroflowmetry

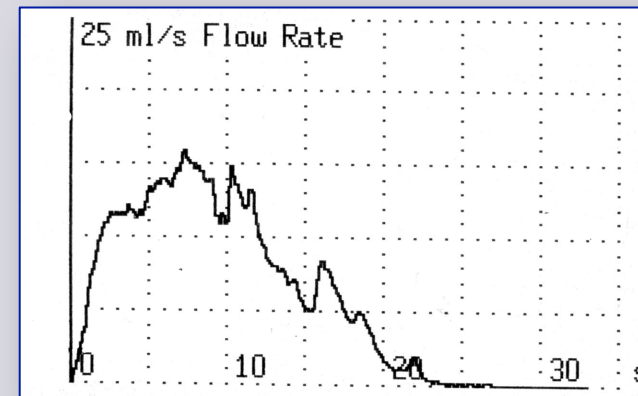
Ultrasonography (kidney – bladder – urethra)

3

Urethrography

Urethroscopy

MRI



Radiological study of urethral stricture

Urethrography

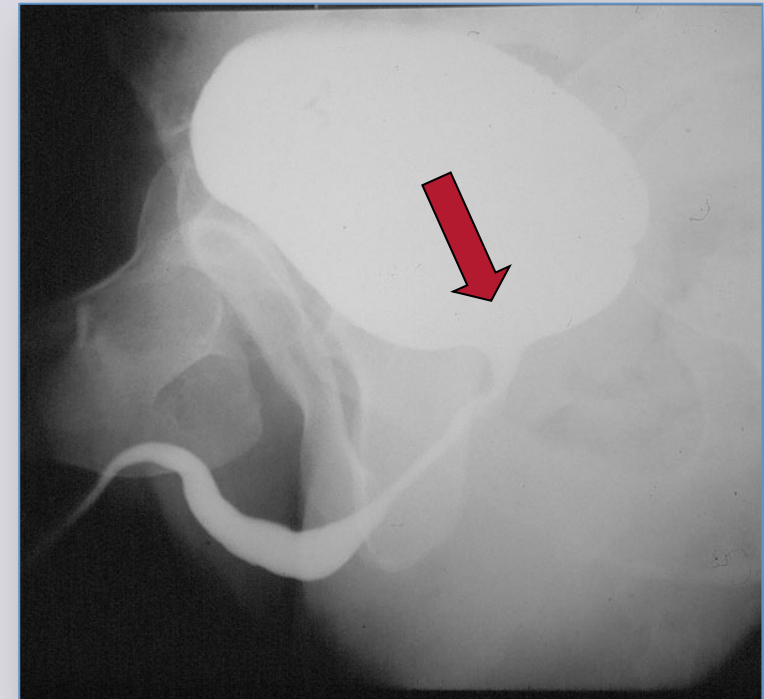
- Retrograde
- Voiding
- Combined

Ultrasonography

Urethroscopy

MRI

Retrograde and voiding urethrography



Object of the radiological study of urethral stricture

- Site

- Number

- Length

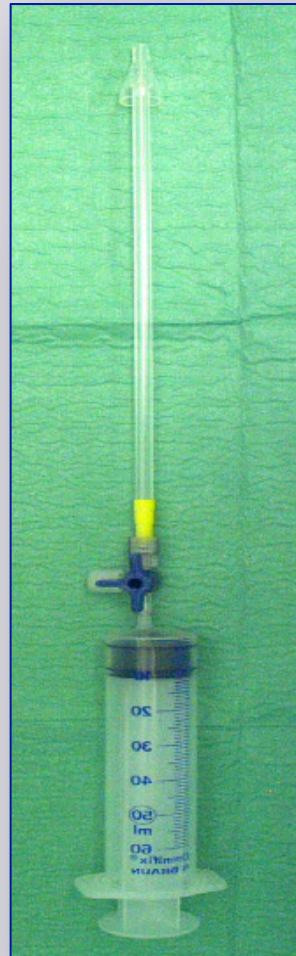
- Spongiofibrosis

- Associated conditions

Retrograde urethrography



appropriate patient position



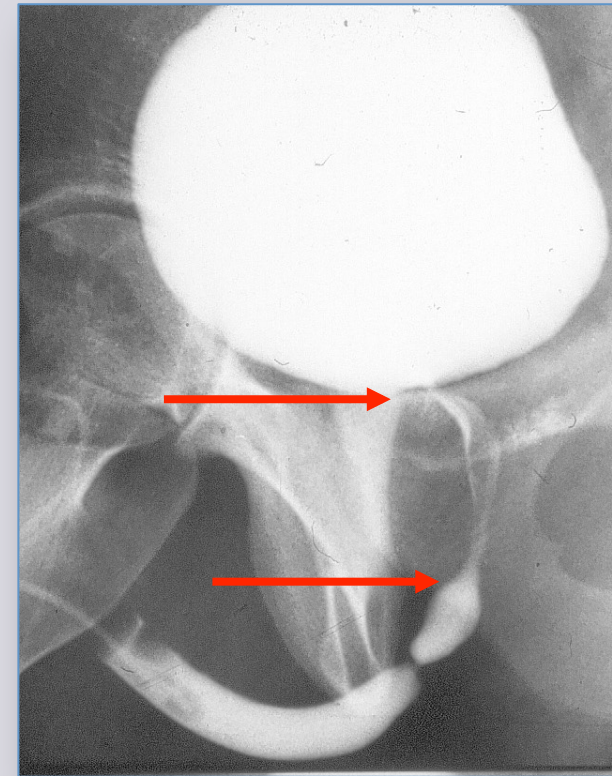
appropriate instruments

Retrograde urethrography

blind point

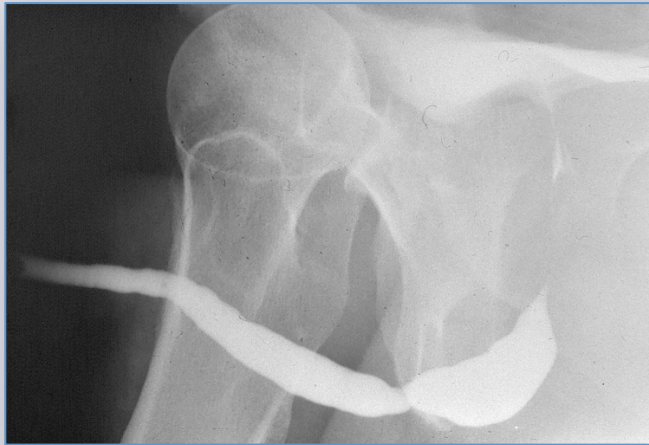


Meatus and navicularis tract

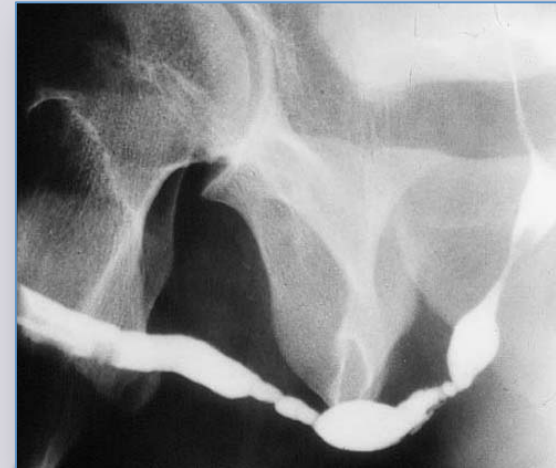


Proximal tract

Retrograde urethrography



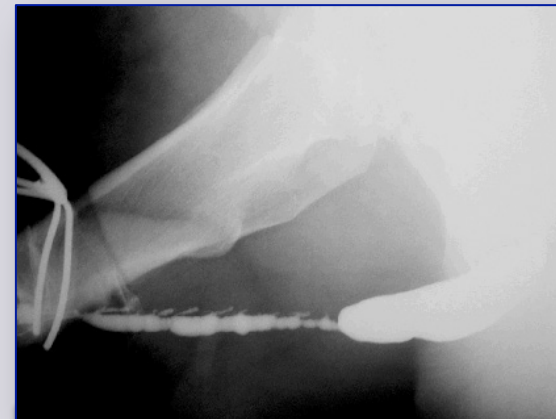
site



number



length



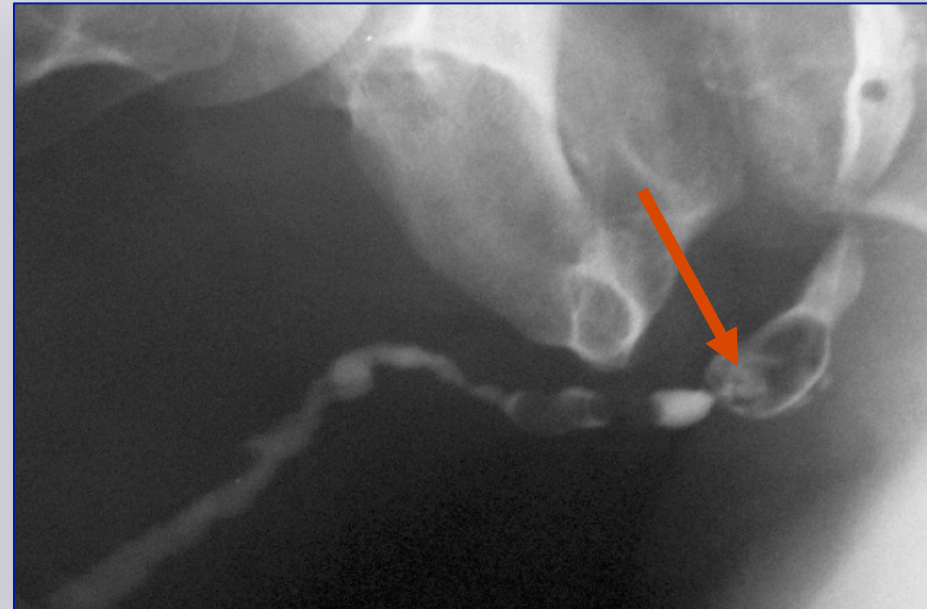
spongiofibrosis

Retrograde urethrography

Associated conditions



diverticulum



stone

Voiding urethrography

appropriate patient position

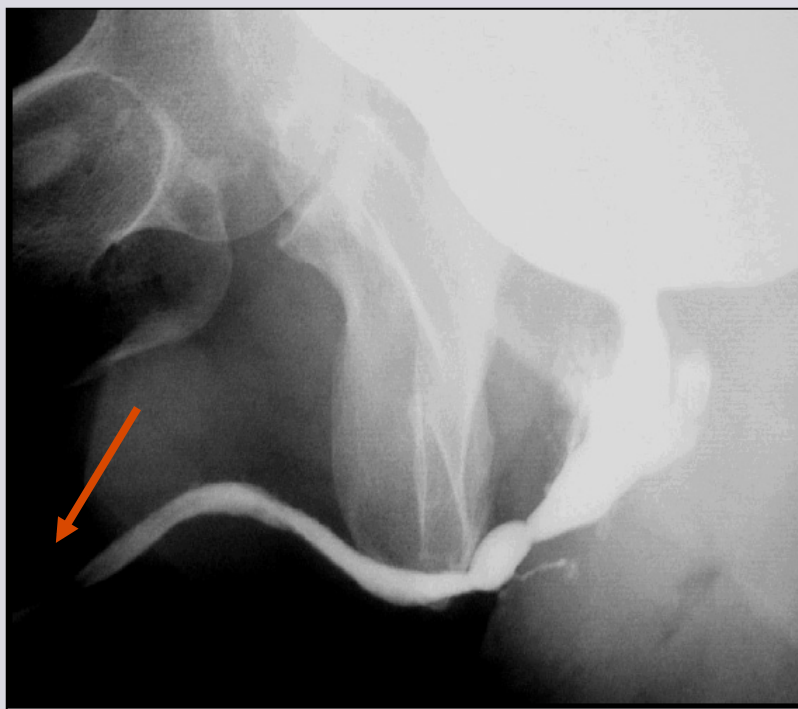


e-mail: info@urethralcenter.it

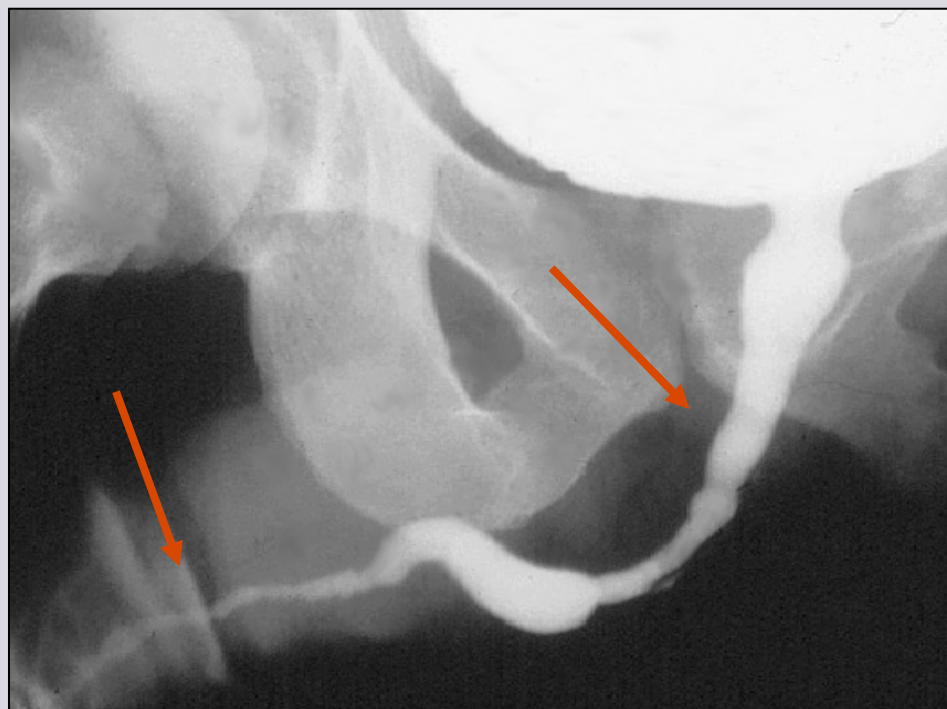
Websites: www.uretra.it
www.urethralcenter.it

Voiding urethrography

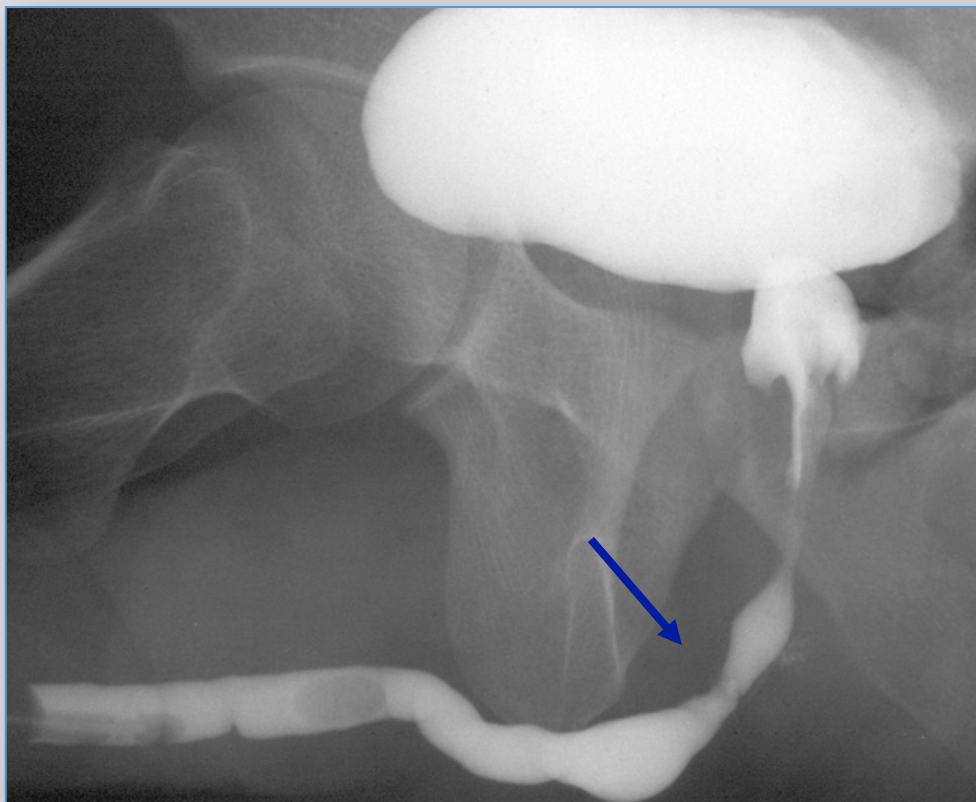
blind point



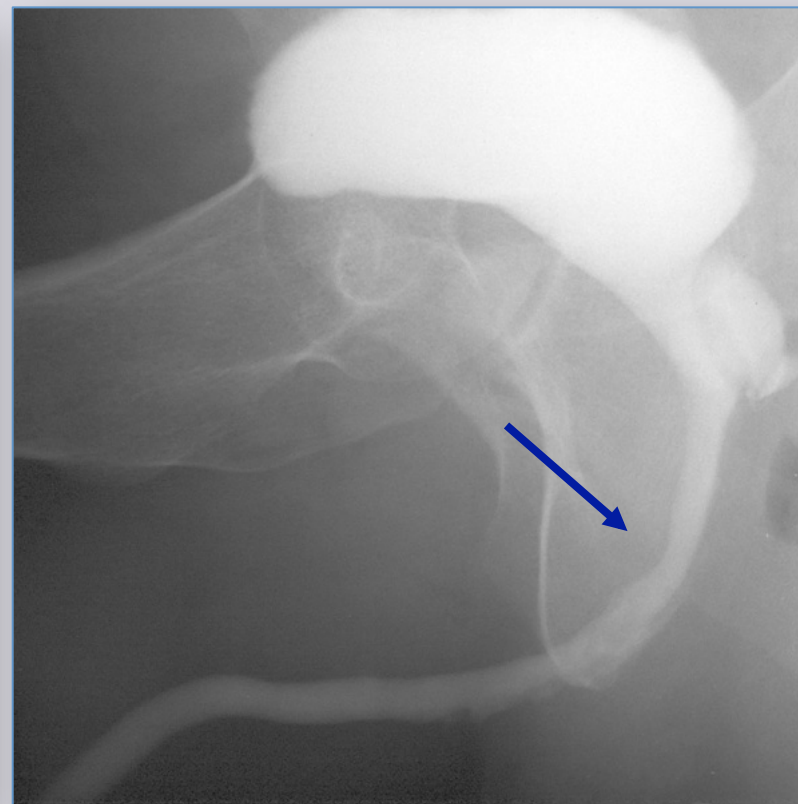
Meatus and navicularis tract



**Distal penile tract
Sphincter area**



Retrograde



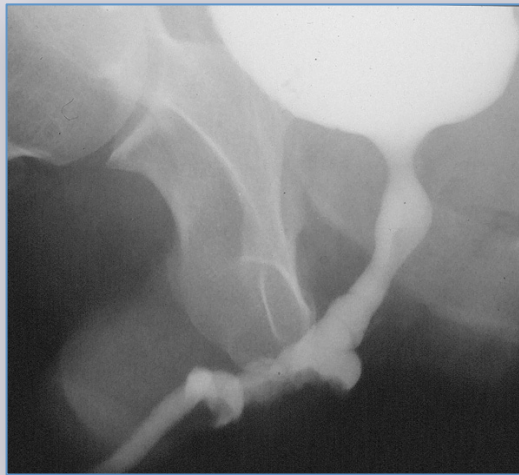
Voiding

Voiding urethrography in patients who underwent bulbar urethroplasty:

evaluation of the outcome



good



satisfactory



poor

Combined cystourethrography



e-mail: info@urethralcenter.it

Websites: www.uretra.it
www.urethralcenter.it

Combined cystourethrography in patient with traumatic posterior urethral stricture



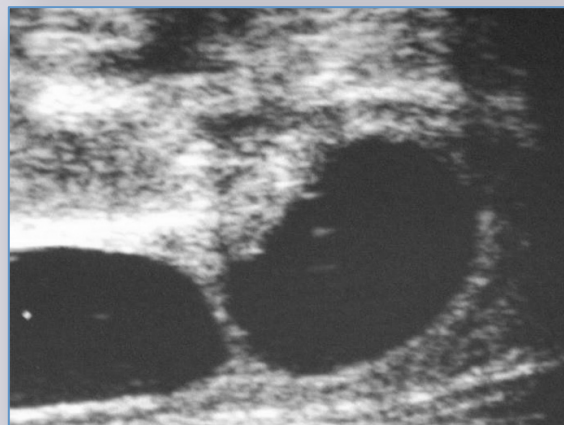
Urethral sonography



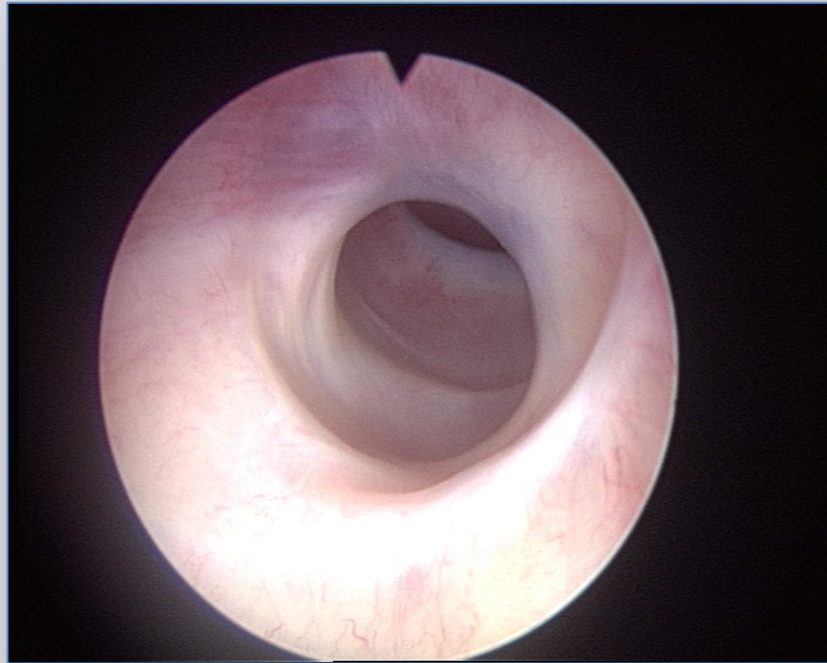
e-mail: info@urethralcenter.it

Websites: www.uretra.it
www.urethralcenter.it

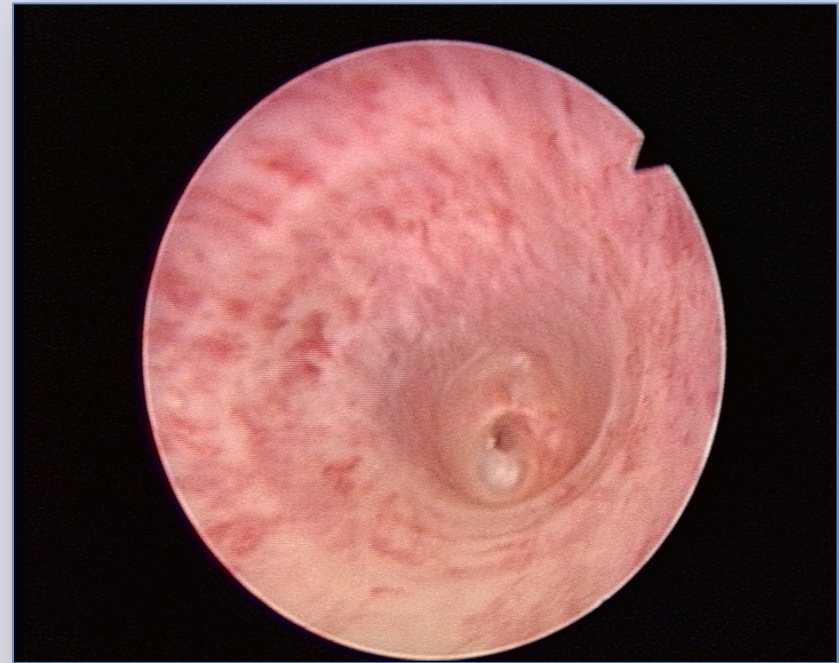
Stricture length and spongiofibrosis



Urethroscopy

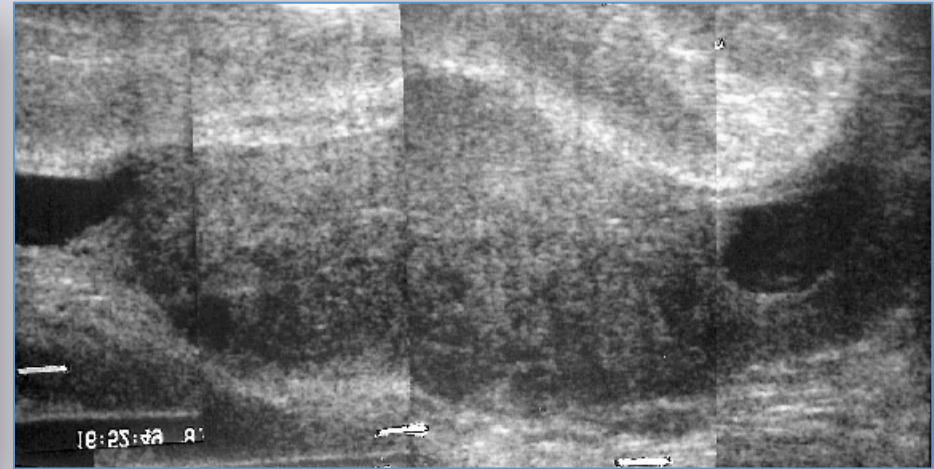
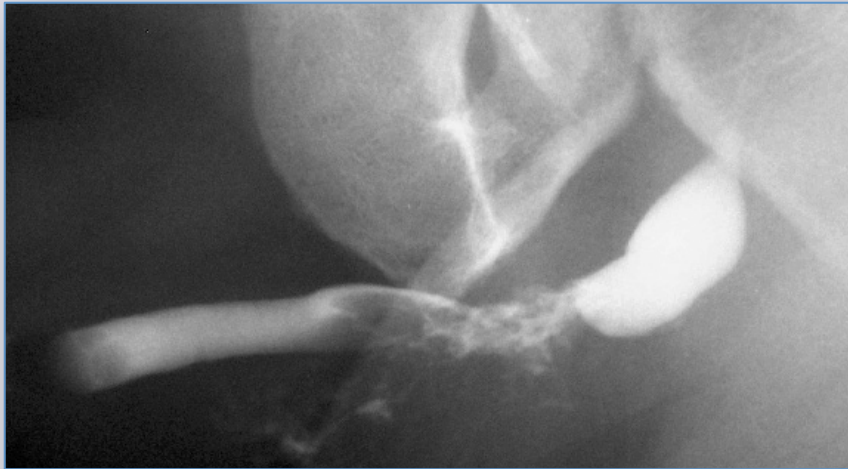


Non-obliterative



obliterative

MRI



e-mail: info@urethralcenter.it

Websites: www.uretra.it
www.urethralcenter.it



Register now !

www.webon.uretra.it

e-mail: info@urethralcenter.it

Websites: www.uretra.it
www.urethralcenter.it